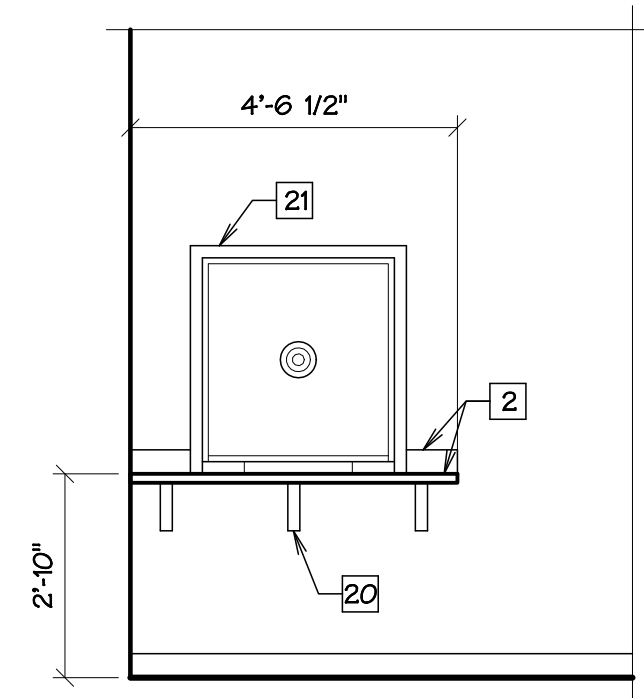
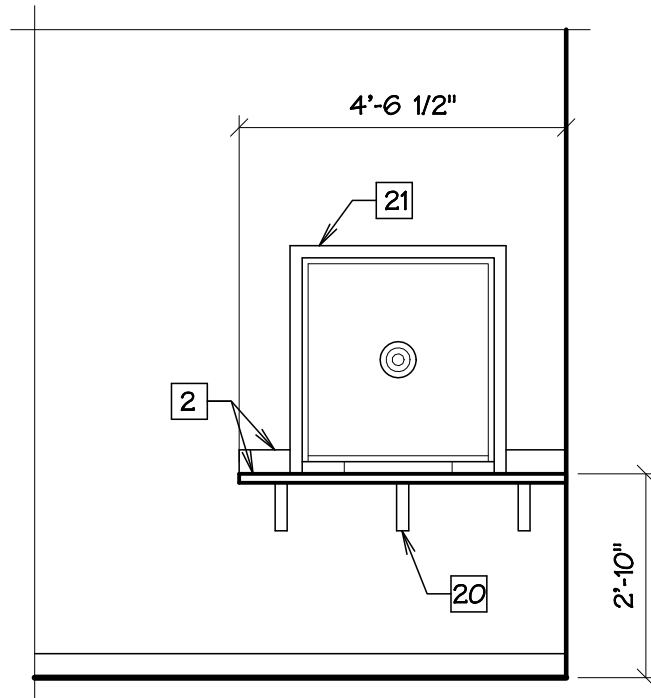


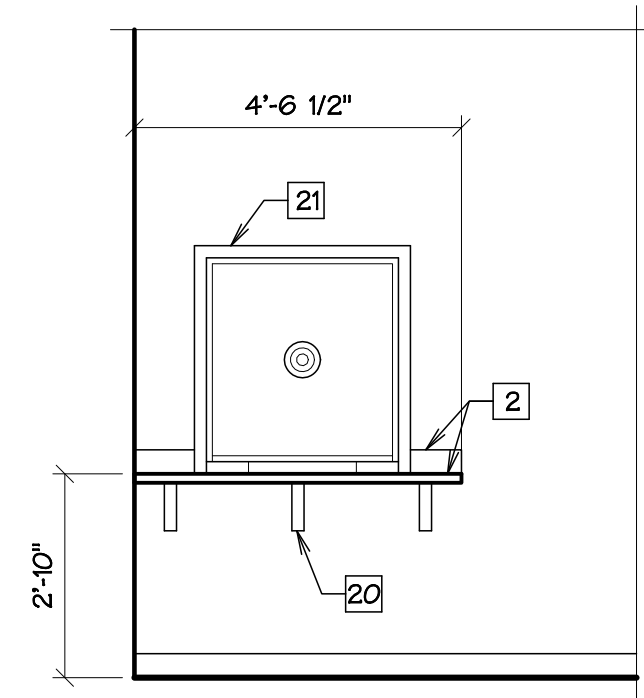
① LOBBY, EAST - 101
3/8" = 1' - 0"



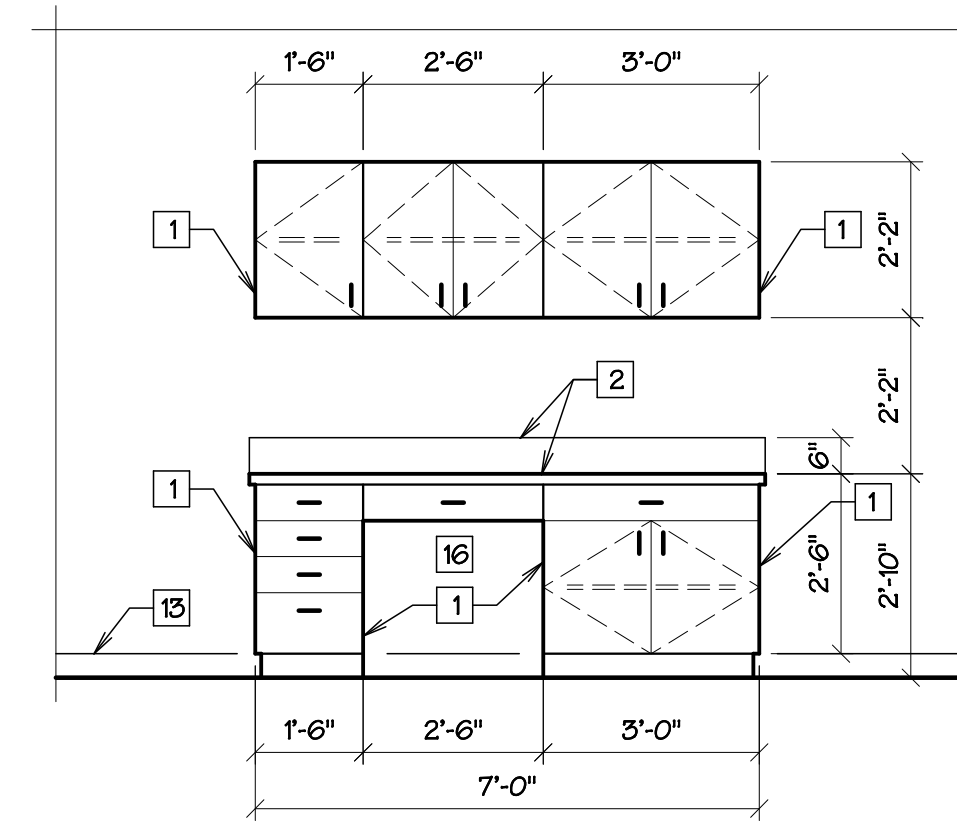
② LOBBY, WEST - 101
3/8" = 1' - 0"



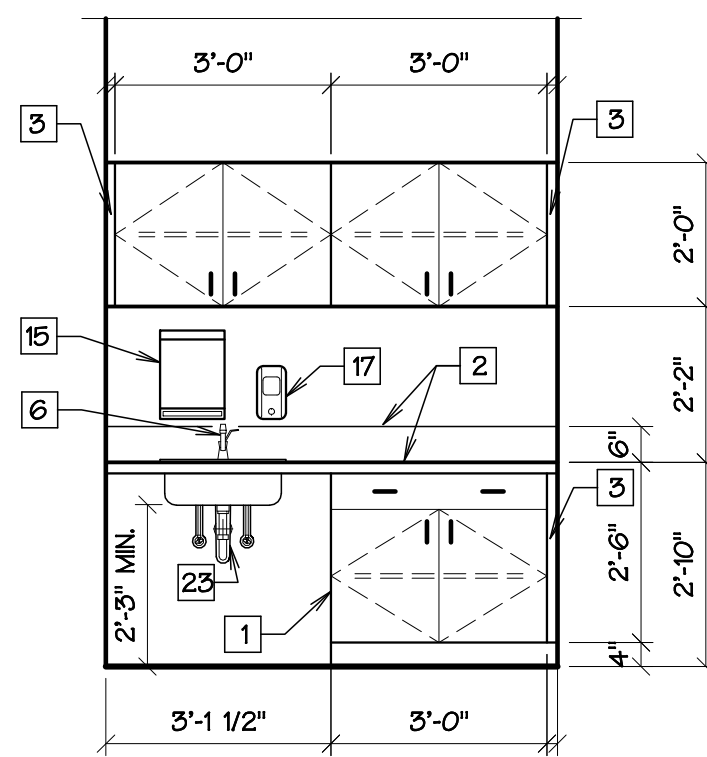
③ COURT CLERKS, EAST - 102
3/8" = 1' - 0"



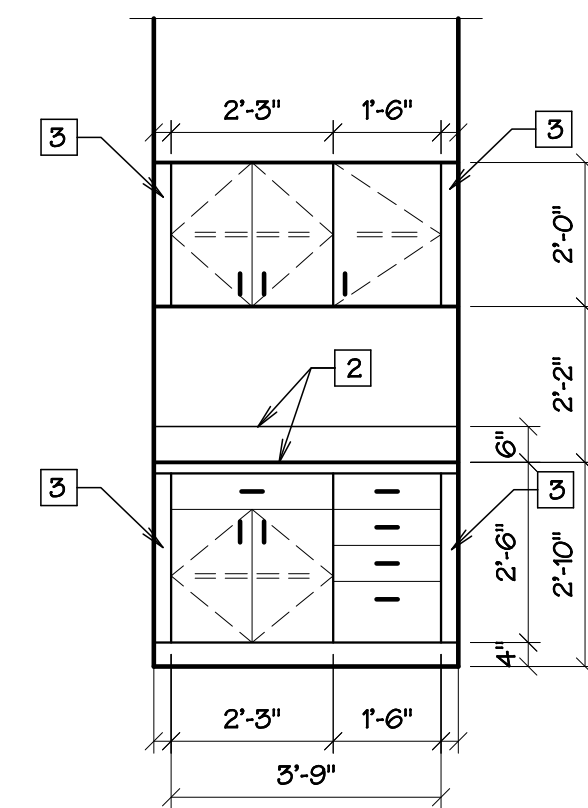
④ POLICE CLERKS, WEST - 136
3/8" = 1' - 0"



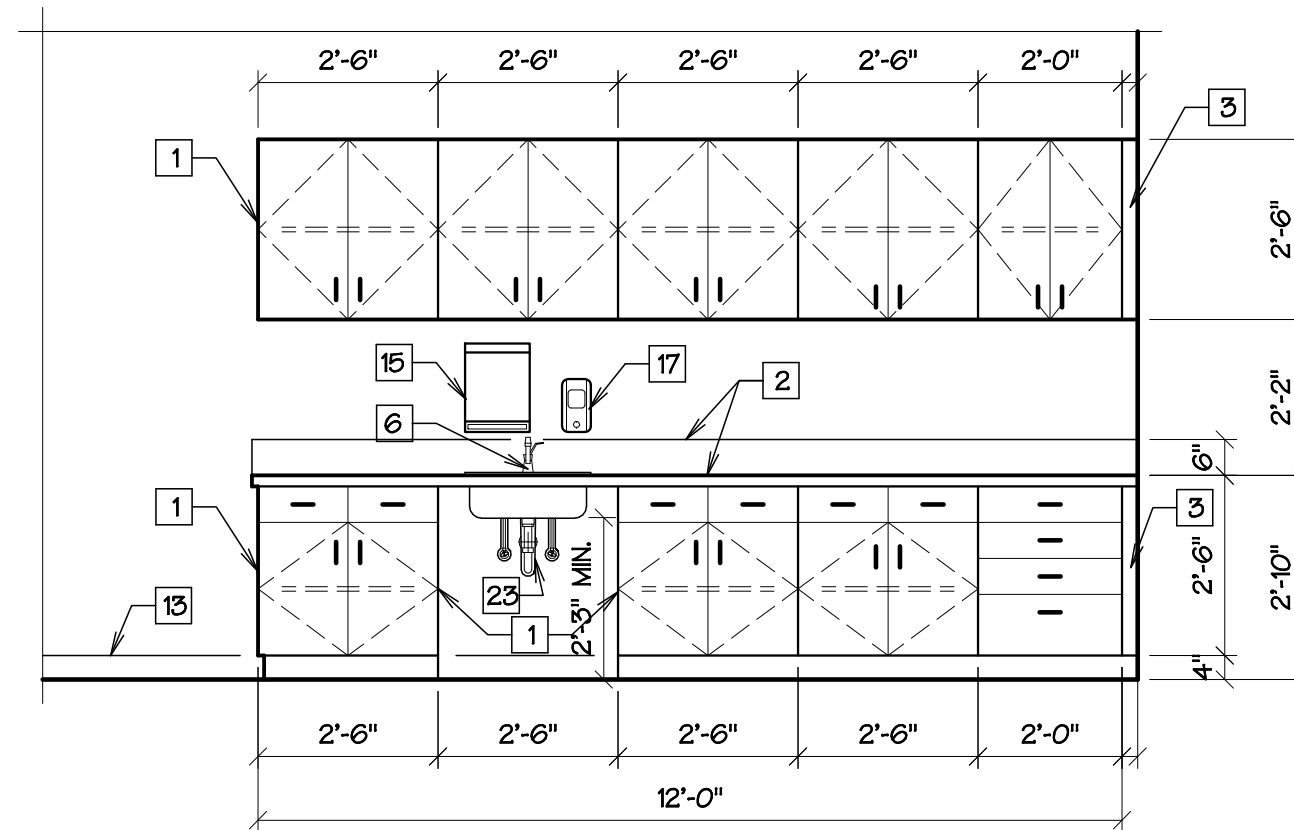
⑤ EVIDENCE - 112
3/8" = 1' - 0"



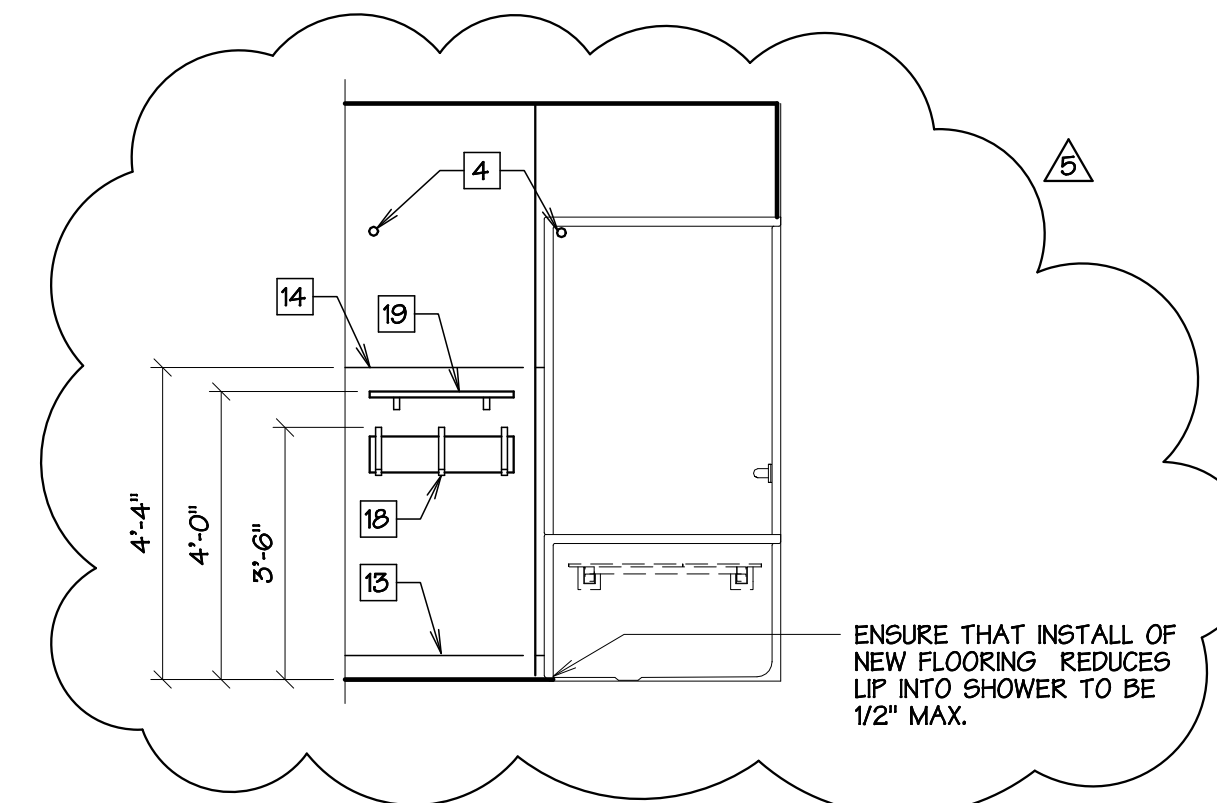
⑥ MULTI-PURPOSE - 116
3/8" = 1' - 0"



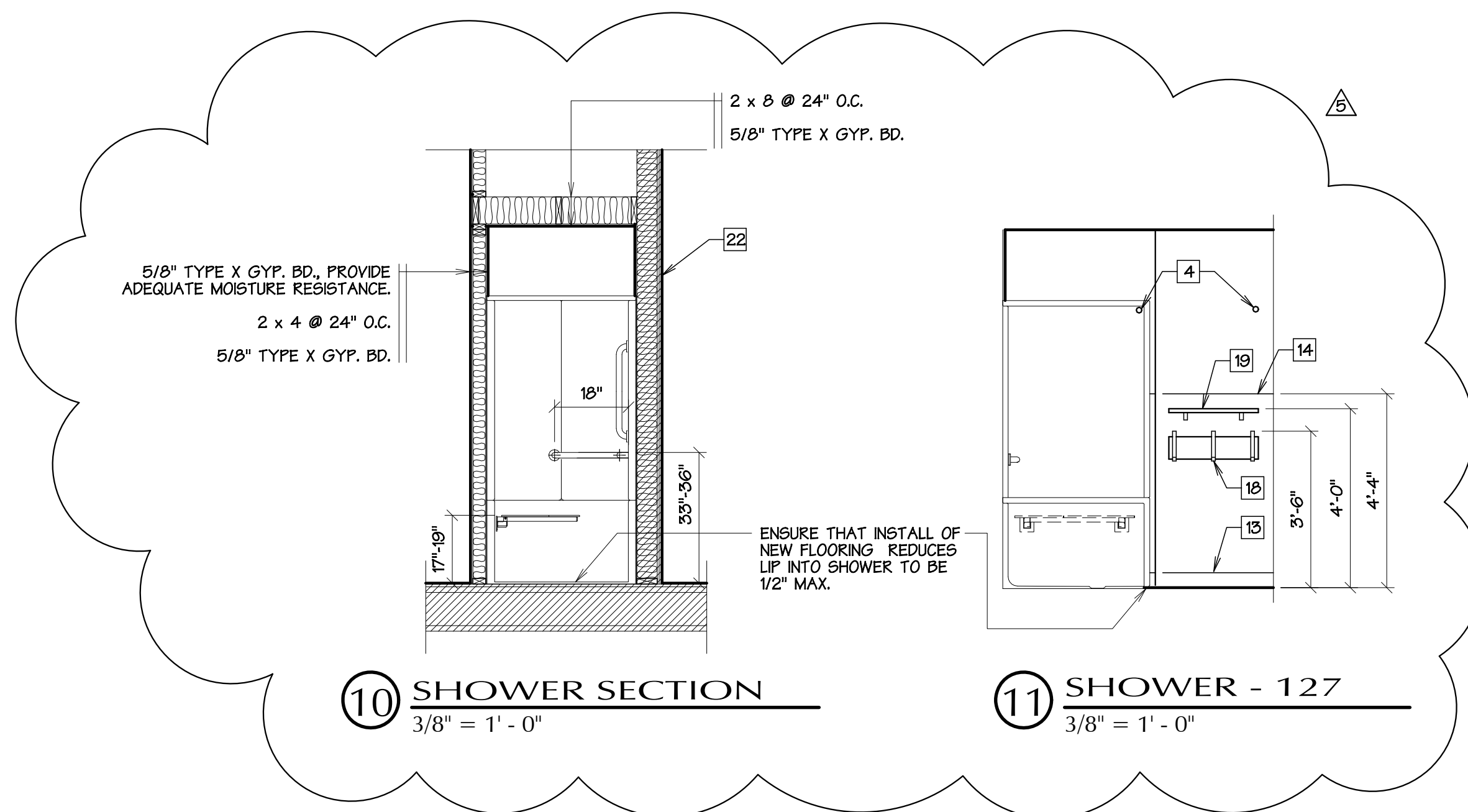
⑦ INTERVIEW - 120
3/8" = 1' - 0"



⑧ BREAK ROOM - 125
3/8" = 1' - 0"



⑨ SHOWER - 131
3/8" = 1' - 0"



⑩ SHOWER SECTION
3/8" = 1' - 0"

⑪ SHOWER - 127
3/8" = 1' - 0"

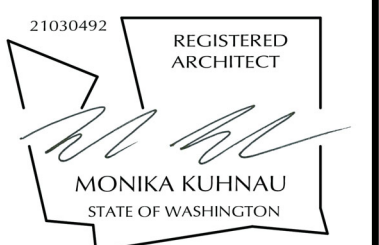
ELEVATION NOTES

- 1 FINISHED END PANEL, TYP.
- 2 PLASTIC LAMINATE TOP, FRONT, END, & BACKSPASH, TYP.
- 3 1-1/2" MIN. WALL SCRIBE, PAINTED OR PLASTIC LAMINATE, MATCH ADJACENT MATERIAL, TYP.
- 4 SHOWER ROD, TYP.
- 5 ADA SHOWER ASSEMBLY - SEE SPECIFICATIONS.
- 6 SINK ASSEMBLY - SEE SPECIFICATIONS.
- 7 GRAB BAR, TYP.
- 8 LOCATE FLUSH HANDLE ON RIGHT SIDE OF TANK.
- 9 SURFACE MIRROR, PROVIDE SECURE BACKING.
- 10 WALL MOUNTED DIAPER CHANGING STATION, PROVIDE SECURE BACKING.
- 11 SURFACE TOILET TISSUE DISPENSER W/ SHELF.
- 12 SURFACE TOILET SEAT COVER DISPENSER.
- 13 4" RUBBER BASE, TYP. PROVIDE RUBBER BASE AROUND BASE CABINETS, TYP.
- 14 FRP WAINSCOT, TYP. - SEE ROOM FINISH SCHEDULE.
- 15 SURFACE PAPER TOWEL DISPENSER. PROVIDE REQUIRED WALL BACKING.
- 16 SPACE FOR KNEE ROOM BENEATH COUNTERTOP.
- 17 SURFACE SOAP DISPENSER, PROVIDE SECURE BACKING.
- 18 SURFACE TOWEL HOOKS, PROVIDE SECURE BACKING.
- 19 WALL MOUNTED SHELF, PROVIDE SECURE BACKING.
- 20 WALL BRACKET AS REQUIRED, TYP.
- 21 SECURITY WINDOW ASSEMBLY, SEE SPECS.
- 22 EXISTING WALL.
- 23 PROVIDE INSULATED, PROTECTIVE COVER AT HOT WATER SUPPLY & WASTE PIPING, TYPICAL.

NOTE: ALL BASE CABINETS SHALL BE 24" DEEP & WALL CABINETS SHALL BE 12" DEEP UNLESS SHOWN OTHERWISE.

PERMIT SET

REVISIONS		
no	date	by
1	12.3.24	MFK



project number	21-45
date	7.18.2024
file name	2145 A300RD
drawn by	TDV
checked by	.
owner approval	_____

title
Interior Elevations & Sections

A301