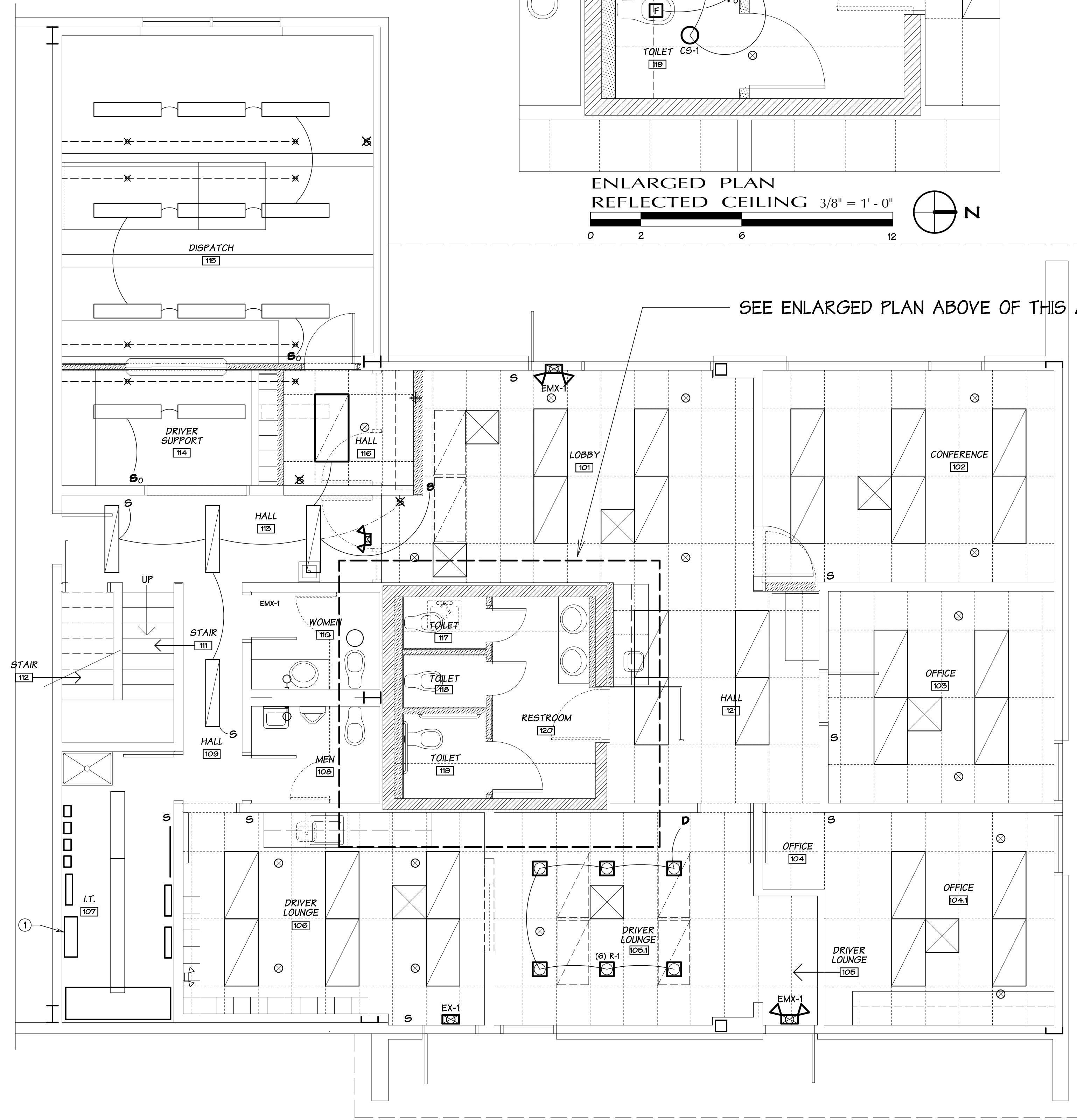
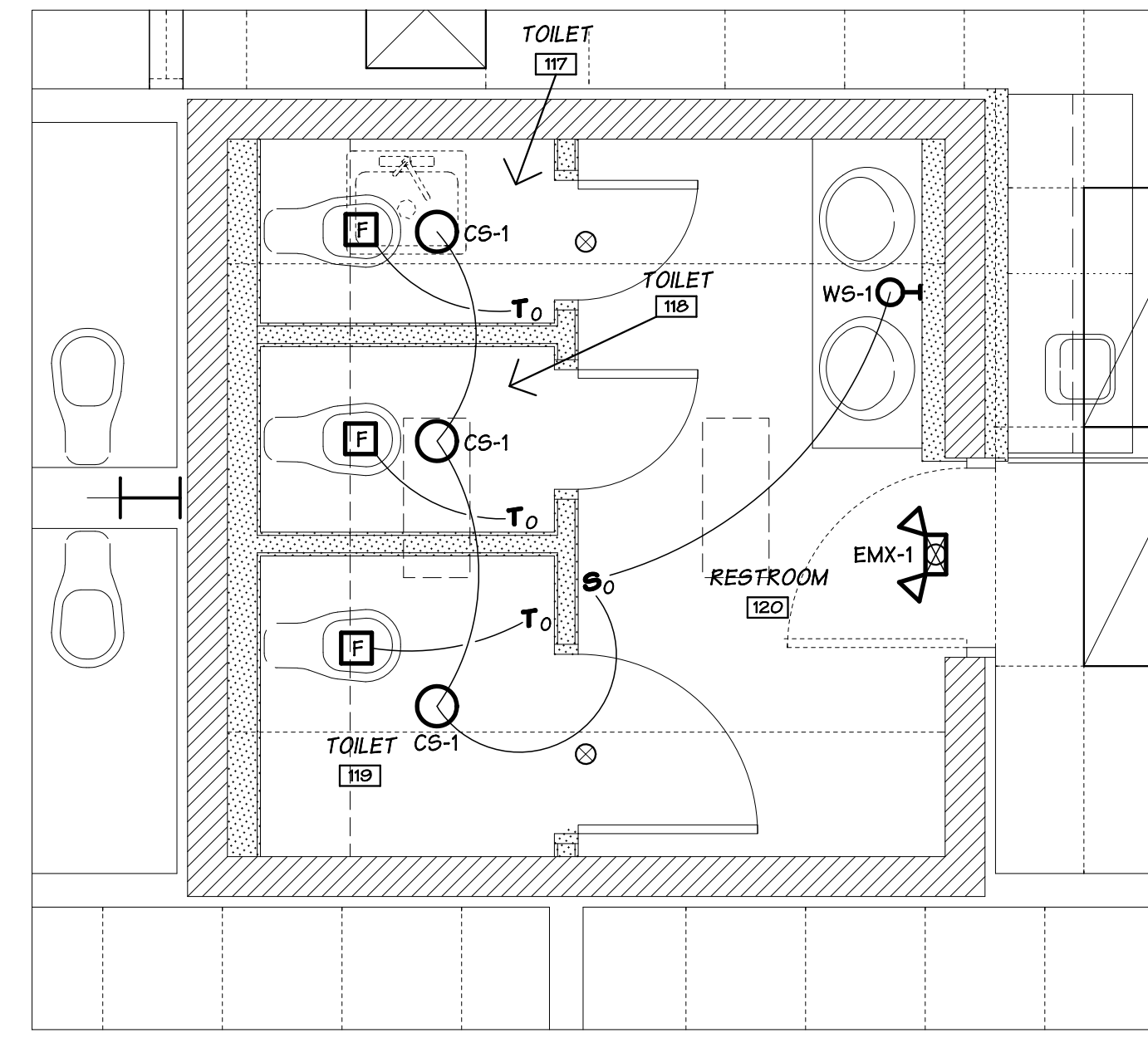


**UPPER PLAN  
 REFLECTED CEILING** 1/4" = 1' - 0"  
 0 3 9 15



**LOWER PLAN  
 REFLECTED CEILING** 1/4" = 1' - 0"  
 0 3 9 15



**ENLARGED PLAN  
 REFLECTED CEILING** 3/8" = 1' - 0"  
 0 2 6 12

**PLAN NOTES**

- 1 SEE SHEET E211 FOR EXISTING ELECTRICAL SWITCHGEAR & PANELS.
- 2 SEE SHEET A200 FOR DEMOLITION OF MISCELLANEOUS ELECTRICAL ITEMS.
- 3 DEMOLISH ALL ELECTRICAL ITEMS ASSOCIATED WITH DEMOLITION OF EXISTING WALLS, CEILINGS, ETC. DISPOSE ALL DEMOLITION DEBRIS OFF SITE, TYPICAL.

**SYMBOL LEGEND**

- ✕ ✕ EXISTING SWITCH TO BE REMOVED
- S EXISTING SWITCH TO REMAIN
- S<sub>0</sub> NEW SINGLE POLE SWITCH W/ OCCUPANCY SENSOR
- D<sub>0</sub> NEW DIMMER SWITCH W/ OCCUPANCY SENSOR
- T<sub>0</sub> NEW TIMER SWITCH W/ OCCUPANCY SENSOR
- NEW SURFACE FIXTURE
- ◻ NEW RECESSED FIXTURE
- ◻ EXISTING SURFACE FIXTURE TO BE REMOVED
- ◻ EXISTING SURFACE FIXTURE TO REMAIN
- ◻ EXISTING LAY-IN FIXTURE TO BE RELOCATED
- ◻ EXISTING LAY-IN OR RECESSED FIXTURE TO REMAIN
- ◻ EXISTING RELOCATED LAY-IN FIXTURE
- EXISTING SURFACE MTD WALL FIXTURE TO REMAIN
- NEW SURFACE MTD WALL FIXTURE
- ⚡ EXISTING EMERGENCY LIGHT
- ⚡ EM-1 NEW EMERGENCY LIGHT
- EX-1 NEW ILLUMINATED EXIT SIGN
- EMX-1 NEW ILLUMINATED EXIT SIGN W/ EMERGENCY LIGHT
- F NEW EXHAUST FAN - CUT OUT EXISTING CONC. AS REQUIRED
- ✕ EXISTING HVAC UNIT TO BE RELOCATED
- ✕ EXISTING HVAC UNIT TO REMAIN
- ✕ NEW LOCATION OF EXISTING HVAC UNIT
- EXISTING PENDENT SPRINKLER HEAD
- ✕ EXISTING UPRIGHT SPRINKLER HEAD & EXPOSED PIPING

**PERMIT SET**

REVISIONS	
no	

project number	19-12F
date	9.04.23
file name	1912FPSEFinal
drawn by	AEG
checked by	ACG
owner approval	_____

title  
**Schematic  
 Lighting Floor  
 Plans & Notes**

**E210**