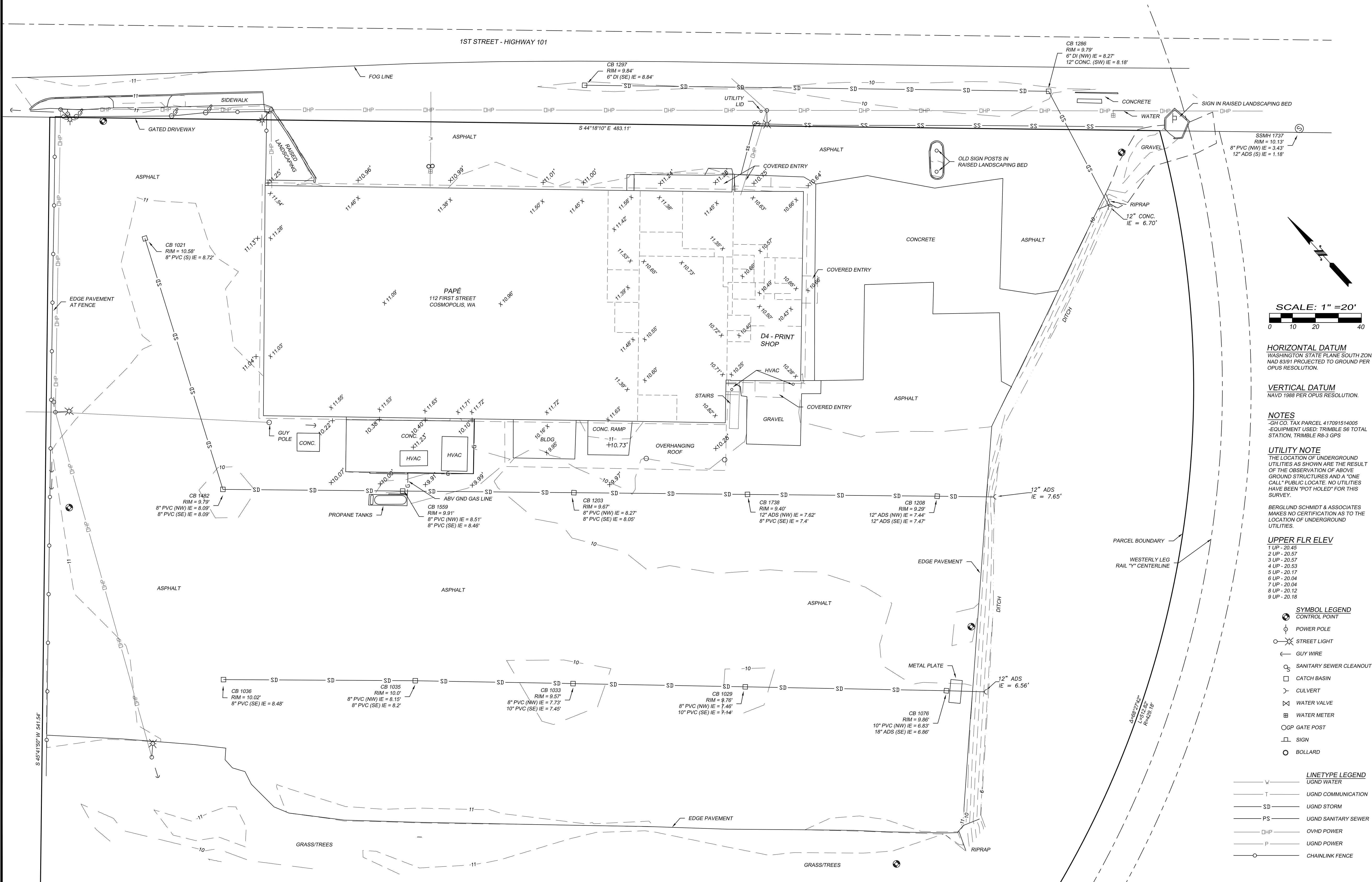


# TOPOGRAPHIC SURVEY

IN SECTION 15, TOWNSHIP 17 NORTH, RANGE 9  
WEST OF THE WILLAMETTE MERIDIAN.



**HORIZONTAL DATUM**  
WASHINGTON STATE PLANE SOUTH ZONE  
NAD 83/91 PROJECTED TO GROUND PER  
OPUS RESOLUTION.

**VERTICAL DATUM**  
NAVD 1988 PER OPUS RESOLUTION.

**NOTES**  
-GH CO. TAX PARCEL 417091514005  
-EQUIPMENT USED: TRIMBLE S6 TOTAL  
STATION, TRIMBLE R8-3 GPS

**UTILITY NOTE**  
THE LOCATION OF UNDERGROUND  
UTILITIES AS SHOWN ARE THE RESULT  
OF THE OBSERVATION OF ABOVE  
GROUND STRUCTURES AND A "ONE  
CALL" PUBLIC LOCATE. NO UTILITIES  
HAVE BEEN "POT HOLED" FOR THIS  
SURVEY.

BERGLUND, SCHMIDT & ASSOCIATES  
MAKES NO CERTIFICATION AS TO THE  
LOCATION OF UNDERGROUND  
UTILITIES.

**UPPER FLR ELEV**

- UP - 20.45
- UP - 20.57
- UP - 20.57
- UP - 20.53
- UP - 20.17
- UP - 20.04
- UP - 20.04
- UP - 20.12
- UP - 20.18

**SYMBOL LEGEND**

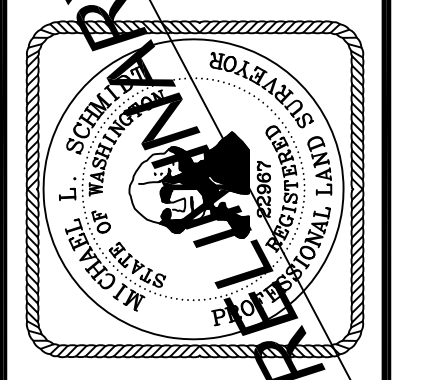
- CONTROL POINT
- ⊙ POWER POLE
- ⊙ STREET LIGHT
- GUY WIRE
- SANITARY SEWER CLEANOUT
- CATCH BASIN
- CULVERT
- ⊗ WATER VALVE
- ⊗ WATER METER
- ⊗ OGP GATE POST
- ⊗ SIGN
- BOLLARD

**LINETYPE LEGEND**

- W UGND WATER
- T UGND COMMUNICATION
- SD UGND STORM
- PS UGND SANITARY SEWER
- DHP OVHD POWER
- P UGND POWER
- CHAINLINK FENCE

#	DATE	REVISION	BY

**TOPOGRAPHIC SURVEY**  
PAPE PROPERTIES, INC.  
112 1ST STREET, COSMOPOLIS, WA 98557  
PREPARED FOR:  
TRAVIS RUTHERFORD, PAPE PROPERTIES  
335 GOODPASTURE ISLAND ROAD  
EUGENE, OR 97401



**BERGLUND, SCHMIDT & ASSOCIATES, INC.**  
Professional engineers and land surveyors  
2323 BAY AVENUE  
HOQUIAM, WA 98550  
TEL: (360) 532-7630  
FAX: (360) 532-9682

April 27th, 2023  
SCALE: 1" = 20'  
JOB NUMBER: 23.025  
DESIGNED BY:  
DRAFTED BY: KS/HP  
CHECKED BY: MLS

N:\PROJECTS\2023\23.025 Pape Topo & Bndry\23025.dwg