

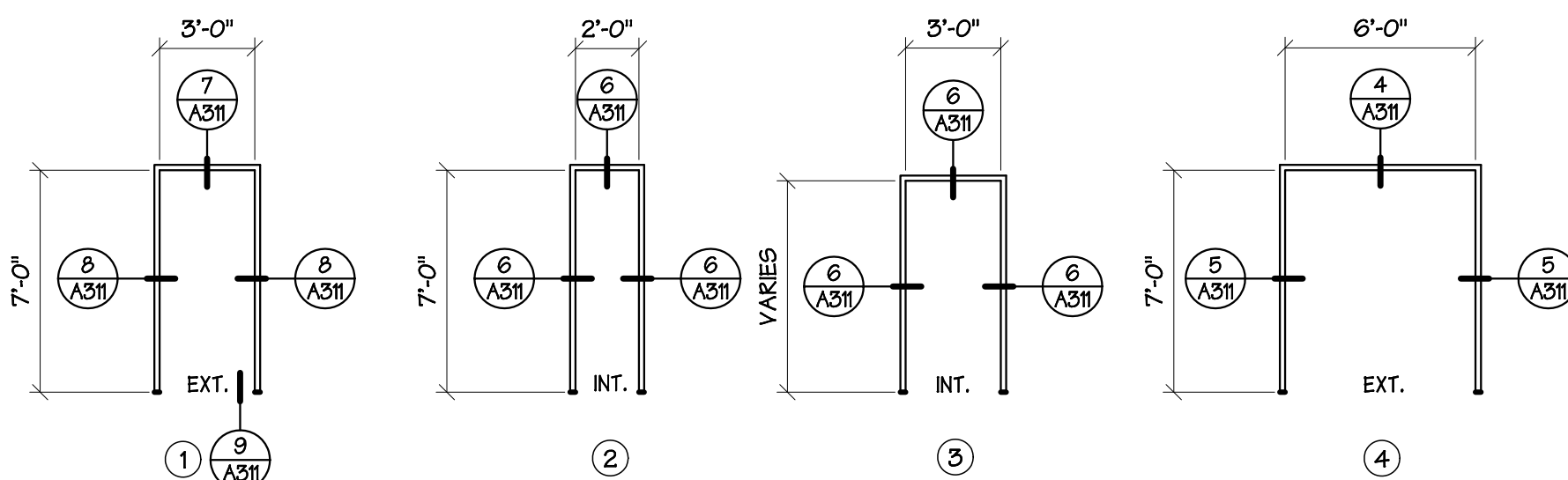
DOOR & FRAME SCHEDULE

NO.	SIZE			DOOR			FRAME			LABEL	HDW. GRP.	REMARKS
	WIDTH	HEIGHT	THICK.	TYPE	MATERIAL	FINISH	TYPE	MATERIAL	FINISH			
101A	3'-0"	7'-0"	1 3/4"	D	ALUMINUM	PAINT	4	STEEL	PAINT	-	1	②
101B	3'-0"	6'-8"	1 3/4"	-	WOOD	STAIN	3	STEEL	PAINT	-	3	①
101C	3'-0"	7'-0"	1 3/4"	A	WOOD	STAIN	3	STEEL	PAINT	-	2	①
102	3'-0"	7'-2"	1 3/4"	A	WOOD	STAIN	3	STEEL	PAINT	-	2	①
103	3'-0"	7'-0"	1 3/4"	A	WOOD	STAIN	3	STEEL	PAINT	-	4	①
104	3'-0"	7'-0"	1 3/4"	-	WOOD	STAIN	3	STEEL	PAINT	-	5	①
105	3'-0"	7'-0"	1 3/4"	-	WOOD	STAIN	3	STEEL	PAINT	-	6	①
106	3'-0"	7'-0"	1 3/4"	-	WOOD	STAIN	3	STEEL	PAINT	-	6	①
107A	3'-0"	7'-0"	1 3/4"	-	WOOD	STAIN	3	STEEL	PAINT	-	7	①
107B	3'-0"	7'-0"	1 3/4"	A	STEEL	PAINT	1	STEEL	PAINT	-	8	②
108	3'-0"	7'-0"	1 3/4"	C	WOOD	STAIN	3	STEEL	PAINT	-	6	①
109	3'-0"	7'-0"	1 3/4"	A	STEEL	PAINT	1	STEEL	PAINT	-	8	②
110	3'-0"	7'-0"	1 3/4"	A	WOOD	STAIN	1	STEEL	PAINT	-	2	①
111A	9'-0"	8'-0"	-	-	-	-	-	-	-	-	9	③
111B	3'-0"	7'-0"	1 3/4"	A	STEEL	PAINT	1	STEEL	PAINT	-	8	②
112	3'-0"	7'-0"	1 3/4"	A	STEEL	PAINT	3	STEEL	PAINT	-	2	②
113	3'-0"	7'-0"	1 3/4"	C	WOOD	STAIN	3	STEEL	PAINT	-	6	①
114	3'-0"	7'-0"	1 3/4"	C	WOOD	STAIN	3	STEEL	PAINT	-	6	①
117	3'-0"	7'-0"	1 3/4"	C	WOOD	STAIN	3	STEEL	PAINT	-	6	①
118	3'-0"	7'-0"	1 3/4"	-	WOOD	STAIN	3	STEEL	PAINT	-	4	①
119	3'-0"	7'-0"	1 3/4"	A	WOOD	STAIN	3	STEEL	PAINT	-	2	①
120	3'-0"	7'-0"	1 3/4"	C	STEEL	PAINT	3	STEEL	PAINT	-	10	②
121	2'-0"	7'-0"	1 3/4"	B	WOOD	STAIN	2	STEEL	PAINT	-	11	①
122	3'-0"	7'-0"	1 3/4"	C	STEEL	PAINT	3	STEEL	PAINT	-	12	②
123A	3'-0"	7'-0"	1 3/4"	A	STEEL	PAINT	3	STEEL	PAINT	-	2	②
123B	3'-0"	7'-0"	1 3/4"	A	STEEL	PAINT	1	STEEL	PAINT	-	4	②
124	3'-0"	7'-0"	1 3/4"	A	STEEL	PAINT	3	STEEL	PAINT	-	2	②
125	3'-0"	7'-0"	1 3/4"	A	WOOD	STAIN	3	STEEL	PAINT	-	4	①
128	3'-0"	7'-0"	1 3/4"	-	WOOD	STAIN	3	WOOD	PAINT	-	9	③
130	3'-0"	7'-0"	1 3/4"	-	WOOD	STAIN	3	WOOD	PAINT	-	9	③
132A	3'-0"	7'-0"	1 3/4"	A	WOOD	STAIN	3	STEEL	PAINT	-	4	①
132B	3'-0"	7'-0"	1 3/4"	A	WOOD	STAIN	3	STEEL	PAINT	-	4	①
136	3'-0"	7'-0"	1 3/4"	A	WOOD	STAIN	3	STEEL	PAINT	-	2	①

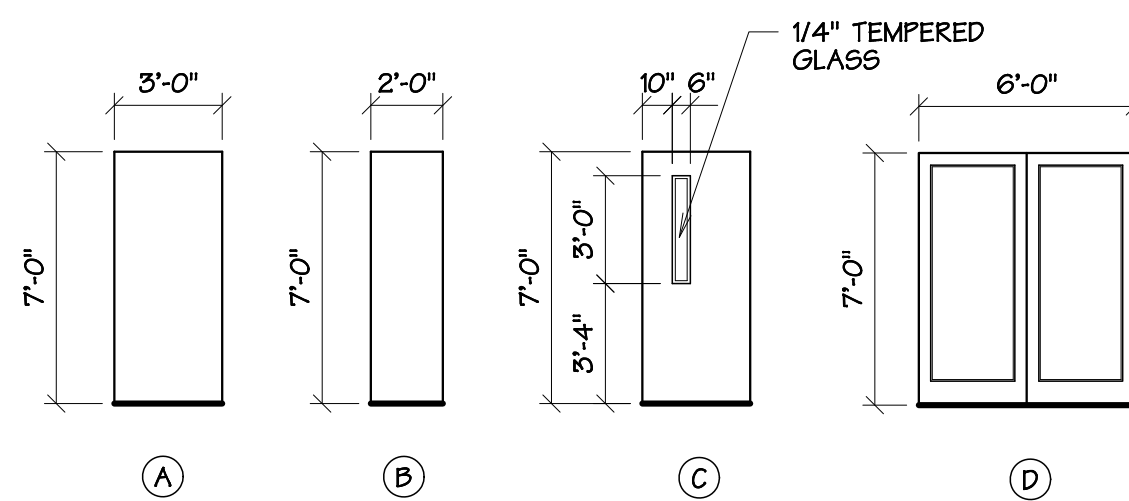
REMARKS

- ① SOLID-CORE DOORS
- ② METAL DOORS
- ③ EXISTING DOOR TO REMAIN UNCHANGED

NOTE: ALL U-VALUES FROM PRESCRIPTIVE ENERGY REQUIREMENTS, SEE A001.



1 FRAME DETAIL
3/16" = 1' - 0"



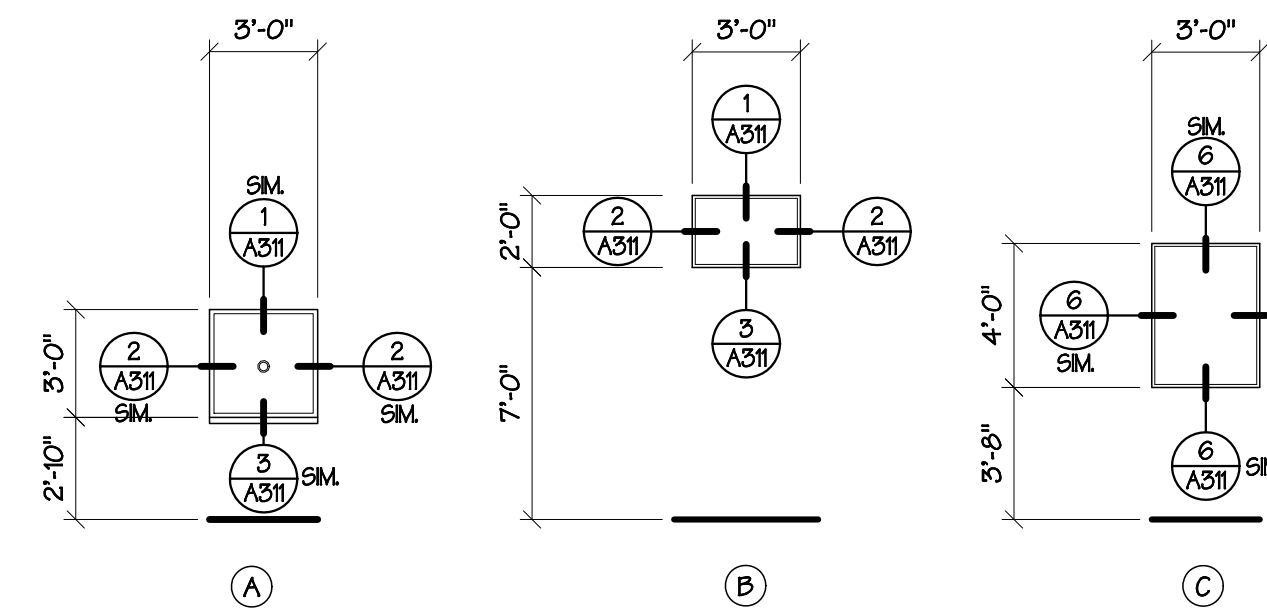
2 DOOR DETAIL
3/16" = 1' - 0"

WINDOW SCHEDULE

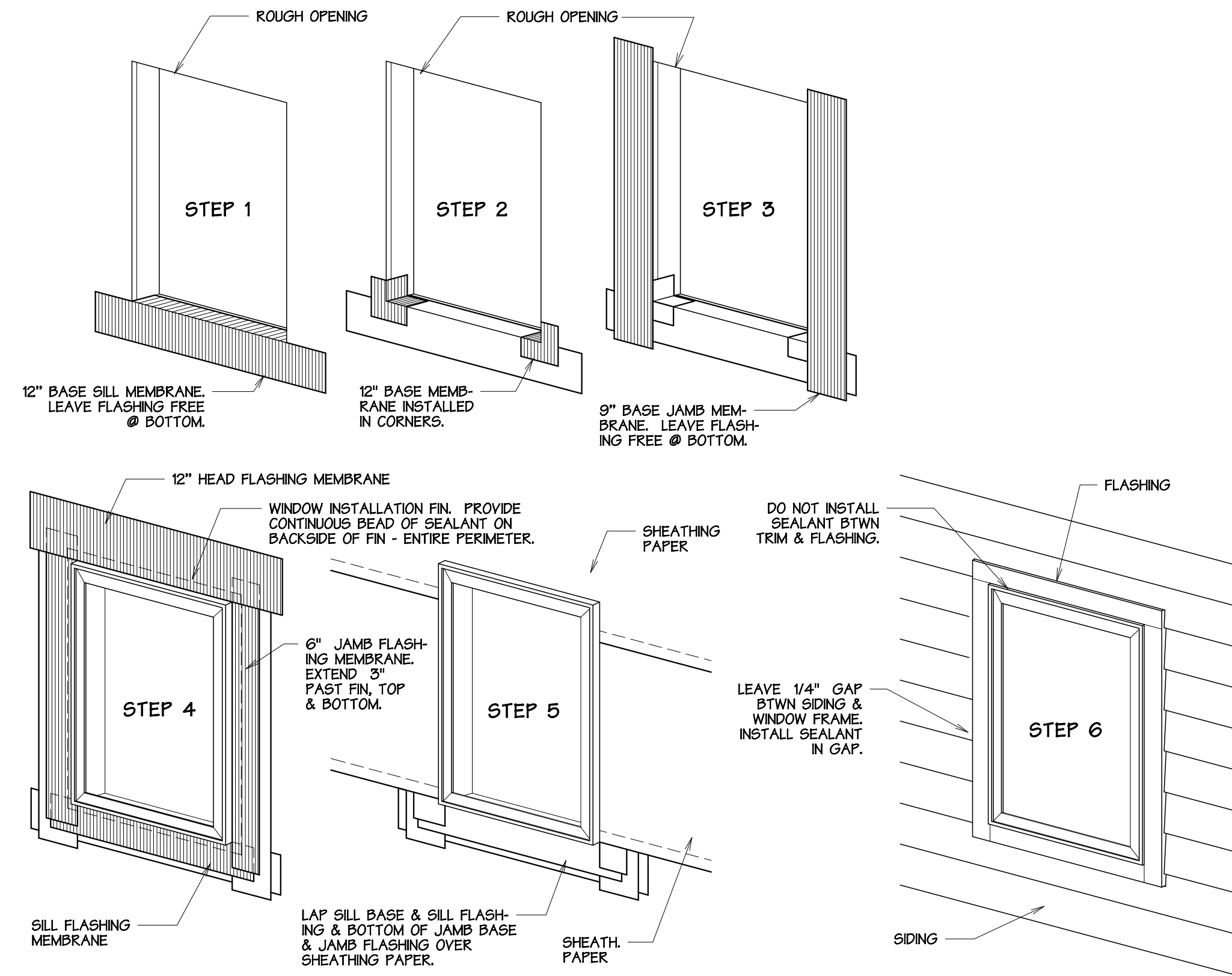
FRAME			GLAZING					REMARKS		
TYPE	MATERIAL	FINISH	VENT. OP.	W x H	KIND	COLOR	MIN. U-FACTOR	PF	SHGC	
A	STEEL	FACTORY	FIXED	3'-0" x 3'-0"	INSUL.	CLEAR	0.23	NA	NA	① ③
B	STEEL	FACTORY	FIXED	4'-0" x 2'-0"	INSUL.	CLEAR	0.23	0.41	0.46	② ④
C	STEEL	FACTORY	FIXED	3'-0" x 4'-0"	INSUL.	CLEAR	0.23	NA	NA	③

REMARKS

- ① SERVICE WINDOW - SEE SPECS
- ② WINDOW PART OF ADD. ALT. #1
- ③ INTERIOR WINDOW
- ④ EXTERIOR WINDOW



3 WINDOW TYPES
3/16" = 1' - 0"



4 WINDOW FLASHING MEMBRANE DETAIL
N.T.S.

PERMIT SET

REVISIONS		
no	date	by
-	-	-

21030492 REGISTERED ARCHITECT
MONIKA KUHNIAU
STATE OF WASHINGTON

project number 21-45
date 7.18.2024
file name 2145 A300RD
drawn by TDV
checked by
owner approval

title
Window & Door Sched.,
Window Flashing &
Wall Details

A310