

ADDENDUM NUMBER FOUR, Page 1

Building Remodel
PAPÉ PROPERTIES INC.
Cosmopolis, Washington

April 26, 2024

All planholders should be on the planholders list to ensure timely receipt of addenda. To be added to the planholders list, send an email to carrie@harborarchitects.com, with company name, telephone, address and email.

This addendum is issued for the purpose of clarification and/or revision of the Project Manual and/or Drawings. This addendum includes the following items:

1. PROJECT MANUAL

A. Section 01 11 00, SUMMARY OF WORK

At paragraph 1.2. WORK PROVIDED BY GENERAL CONTRACTOR – PRICE IN CONTRACT
Delete subparagraph 5. Foundation system for bridge crane.

Add the following subparagraph:

20. Heavy Duty Guard Rails and Corner Protectors. See new attached Specification Section 10 26 16.

At paragraph 1.3. MATERIAL S FURNISHED BY OWNER & INSTALLED BY GENERAL CONTRACTOR – PRICE IN CONTRACT, at subparagraph 1. New metal swing doors and frames, wood doors and finish hardware, add the following:

d. TruNorth Door Co. LLC materials price: \$63,874.00

At subparagraph 1. Lighting fixtures and controls, add the following:

d. CES materials price: \$151,210.00

At paragraph 1.4. WORK PROVIDED BY OWNER – PRICE IN CONTRACT, at subparagraph 1 Coiling doors at the building exterior and interior, add the following:

d. Engineered Products – Overhead Door materials and installation price: \$119,838.00

At subparagraph 3. Voice/data cabling and all terminations, add the following:

d. Xtreme Communications Inc. materials and installation price: \$65,866.06

At subparagraph 4. Storage Racks, add the following:

d. Engineered Products materials and installation price: \$93,852.00

Delete subparagraph 5. Truck barriers and corner guards in the Shop.

At subparagraph 6. Lockers, add the following:

d. Engineered Products materials and installation price: \$5,930.00

At subparagraph 7. Installation of shop equipment, add the following:

d. Electrical Subcontractor service price: To be provided by ES

At subparagraph 8. Fluid Storage Tanks, add the following:

d. Equipment Sales Co. materials and installation price: \$17,157

At subparagraph 9. Cord Reels, add the following:

d. Equipment Sales Co. materials and installation price: \$175,054

ADDENDUM NUMBER FOUR, Page 2

Building Remodel
PAPÉ PROPERTIES INC.
Cosmopolis, Washington

- B. Section 08 11 16, ALUMINUM DOORS & FRAMES
At paragraph 2.2. DOORS – STANDARD ENTRANCES, at subparagraph 1. Series, change “350 Medium Stile (3 1/2”) to “500 Wide Stile (5”).
- C. Add the following specification sections:
Section 10 26 16, PROTECTION DEVICES
Section 23 84 10, ELECTRIC HEATING EQUIPMENT

2. DRAWINGS

- A. Sheet A100, Architectural Site Plan & Notes
Add (2) bollard at new utility pole location at southwest corner of the building – location as directed by Owner.
- B. Sheet A210, Lower Floor Plan & Notes
At Plan Note 2, change to read: “Future location of bridge crane structure (NIC).
- C. Sheet A211, Enlarged Floor Plans & Notes
Provide gypsum board wrap and associated wood framing around columns in the following locations:
(1) Column in Drivers-106, (3) columns in Service Department-112, (1) column in Service Entry-113, and (4) columns in Parts Department-117/119/120.
- D. Sheet A212, Enlarged Plans, Notes & Interior Elevations & Notes
Plumbing fixtures shown on these elevations are shown to reference associated items such toilet room accessories, toilet partitions, etc. Plumbing fixtures are to be provided as shown on Plumbing Fixture Schedule on Sheet P002.
- E. Sheet S210, Foundation Plan & Notes
Provide guard rail and additional bollard locations shown on attached Drawing 1 of 1.
Delete bollard shown on south exterior side of Equipment/Storage-104
- F. See attached revised Sheets E001, ED201, E201 and E202.

3. SUBSTITUTION REQUEST APPROVALS

Section 233423	HVAC Power Ventilators	Greenheck, Big Ass Fans, Twin City Fan
Section 235533	Tubular Infrared Heaters	Roberts-Gordon Vantage CTH2V-125, Reznor
Section 238129	Variable Refrigerant Flow HVAC Systems	Mitsubishi
Section 238410	Electric Wall Heaters	King

1. GENERAL

1.1. GENERAL REQUIREMENTS

Conform to:

1. Division 00 00 00: Procurement & Contracting Requirements.
2. Division 01 00 00: General Requirements.

1.2. DESCRIPTION

Provide Protection Devices where shown on the Drawings, as specified herein and as needed for a complete and proper installation.

1.3. RELATED WORK

1. Section 10 26 00: Wall Protection Systems.

1.4. QUALITY ASSURANCE

1. Use adequate numbers of skilled workers who are thoroughly trained and experienced in the necessary crafts and who are completely familiar with the specified requirements and the methods needed for proper performance of the work of this Section.
2. The Contractor and all related subcontractors shall possess industry standard understanding of the latest editions of the International Building Code (IBC) and all other relevant codes that govern work in this Section and all related Sections.

1.5. SUBMITTALS

1. Submit manufacturer's data.
2. See Section 01 33 00 for Submittals.

1.6. PRODUCT HANDLING

Store in factory shipping containers off floor, on edge in dry location.

1.7. WARRANTY

Provide manufacturer's standard warranty against materials and workmanship defects for a period of (3) years from the date of substantial completion.

2. PRODUCTS

2.1. HEAVY DUTY GUARD RAIL

1. Manufacturer: Handle It Inc., or equal.
2. Height: (43) inches.
3. Length: As shown on Drawings.
4. Material: (13) gauge ASTM A1011 steel.
5. Posts: 4.75" x 4.75" square steel tube on 10" x 10" base plate. 4-way posts allowing rails to be attached to any side of post.
6. Rails: (12) inches high, 5/64" thickness with (2) ribs.
7. Finish: Powder coated in safety yellow color.
8. Anchors (provided by manufacturer): (4) 3/4" x 4 1/2" per post. (2) 1/2" x 1 3/16" at each end of rails to post.

2.2. CORNER PROTECTORS

1. Manufacturer: Handle It Inc., or equal.
2. Height: (24) inches.
3. Material: 1/4 " thickness steel.
4. Finish: Powder coated in safety yellow color.
5. Anchors (not provided): (3) 1/2" wedge anchors.

3. EXECUTION

3.1. HEAVY DUTY GUARD RAIL

1. Assemble guard rails in accordance with manufacture's written instructions.
2. Install guard rails in accordance with manufacturer's written instructions in locations shown on Drawings.

3.2. CORNER PROTECTORS

1. Install corner protectors at corners of storage racking in accordance with manufacture's written instructions as directed by Owner.
2. For bidding purposes provide (13) corner protectors on Lower Floor.

END, SECTION 10 26 16

**SECTION 238410
ELECTRIC HEATING EQUIPMENT**

PART 1 GENERAL

1.01 SECTION INCLUDES

- A. Electric Duct Heaters
- B. Electric Unit Heaters
- C. Electric Wall Heaters

1.02 RELATED REQUIREMENTS

- A. Division 01, General Requirements
- B. Division 23, Heating, Ventilating, and Air Conditioning (HVAC)

1.03 SUBMITTALS

- A. See Section 013000 - Administrative Requirements for submittal procedures.
- B. Product Data: Showing performance data, ratings, electrical data, wiring diagrams, fusing quantity and types.
- C. Operating and Maintenance Data

1.04 QUALITY ASSURANCE

- A. Manufacturer Qualifications: Company specializing in manufacturing products specified in this section, with at least three years of documented experience.

PART 2 PRODUCTS

2.01 MANUFACTURERS

- A. Electric Duct Heaters:
 - 1. Greenheck
 - 2. Indeeco
 - 3. Markel
 - 4. Chromalox
 - 5. Redd-i
 - 6. Tuttle & Bailey
 - 7. Dell Heatrix
 - 8. Valley Industries
 - 9. Warren
 - 10. Electric duct heaters supplied as an integral component of terminal units, heat pumps, etc. are acceptable.
- B. Electric Unit Heaters:
 - 1. Indeeco
 - 2. Markel
 - 3. Chromalox
 - 4. Trane
 - 5. Modine
 - 6. Reznor
 - 7. Redd-i
 - 8. Q-Mark
- C. Electric Wall Heaters:
 - 1. Chromalox
 - 2. Markel
 - 3. Indeeco
 - 4. Cadet
 - 5. Q-Mark

2.02 ELECTRIC DUCT HEATERS

A. Description:

1. Resistance wire shall be iron free, 80 percent nickel and 20 percent chromium, spaced no more than 4-inches apart with ceramic insulators and bushings, supported in aluminum steel frame.
2. Test dielectrically for 1000V plus twice the rated voltage.
3. Designed for horizontal or vertical air flow as required.
4. Three Phase Heaters: Shall have balanced three phase steps.
5. Control Voltage: 24V
 - a. Overcurrent Protection:
 - b. Built-in and prewired fuses with one overcurrent device for each 48A circuit except with only one overcurrent device required for entire heater for those heaters rated 48 amperes or less.
 - c. Fuses sized for available fault current with 20,000 AIC rating minimum.
 - d. Supplier to coordinate with Division 26, Electrical.
6. Disc-type automatic reset thermal cutout for primary protection.
7. For secondary protection, furnish a sufficient number of heat elements in case the primary cutout fails.
8. Thermal cutout and heat limiters shall be serviceable through the terminal box without removing the heater.
9. Terminal box with hinged, solid cover, duct mounted or remote as indicated on drawings.
10. Built-in Accessories: Factory wired with terminal blocks as required for field connections.
 - a. Contactors:
 - 1) Mercury-type to de-energize heater circuits; 3-pole line break for three phase and 1-pole break for single phase.
 - 2) Furnish a contactor for each heater circuit (step).
 - b. Air Flow Switch:
 - 1) Pressure type to de-energize heater in the event of inadequate air flow.
 - 2) Switch located to function down to 25 percent of maximum air volume on discharge side of terminal unit.
 - c. Transformer: With primary fuse protection to supply control voltage.
 - d. Built-in disconnect switch.
11. Frame Style: Flanged medium pressure application. Slip-in or flanged for low pressure application, suitable for lined ductwork.
12. Capacity: See Schedule on Drawings for KW rating, number of steps and duct sizes.

2.03 ELECTRIC UNIT HEATERS

A. Description:

1. Horizontal or vertical discharge as indicated on drawings, complete with fan, motor, heavy gauge steel casing with adjustable discharge louvers, tubular finned heating element, automatic reset thermal overloads, and control circuit transformer.
2. Capacity as indicated.
3. UL listed and wired per NEC.
4. Thermostat: Unit mounted built-in, adjustable.

2.04 ELECTRIC WALL HEATERS

A. Description:

1. Heavy duty, wall mounted forced air unit heater, complete with steel enclosure for recessed mounting, fan and motor, steel sheathed heating elements with manual reset thermal overloads, capacity as indicated on drawings.
2. UL listed and wired per NEC.
3. Thermostat: Unit mounted, built-in, adjustable.

PART 3 EXECUTION

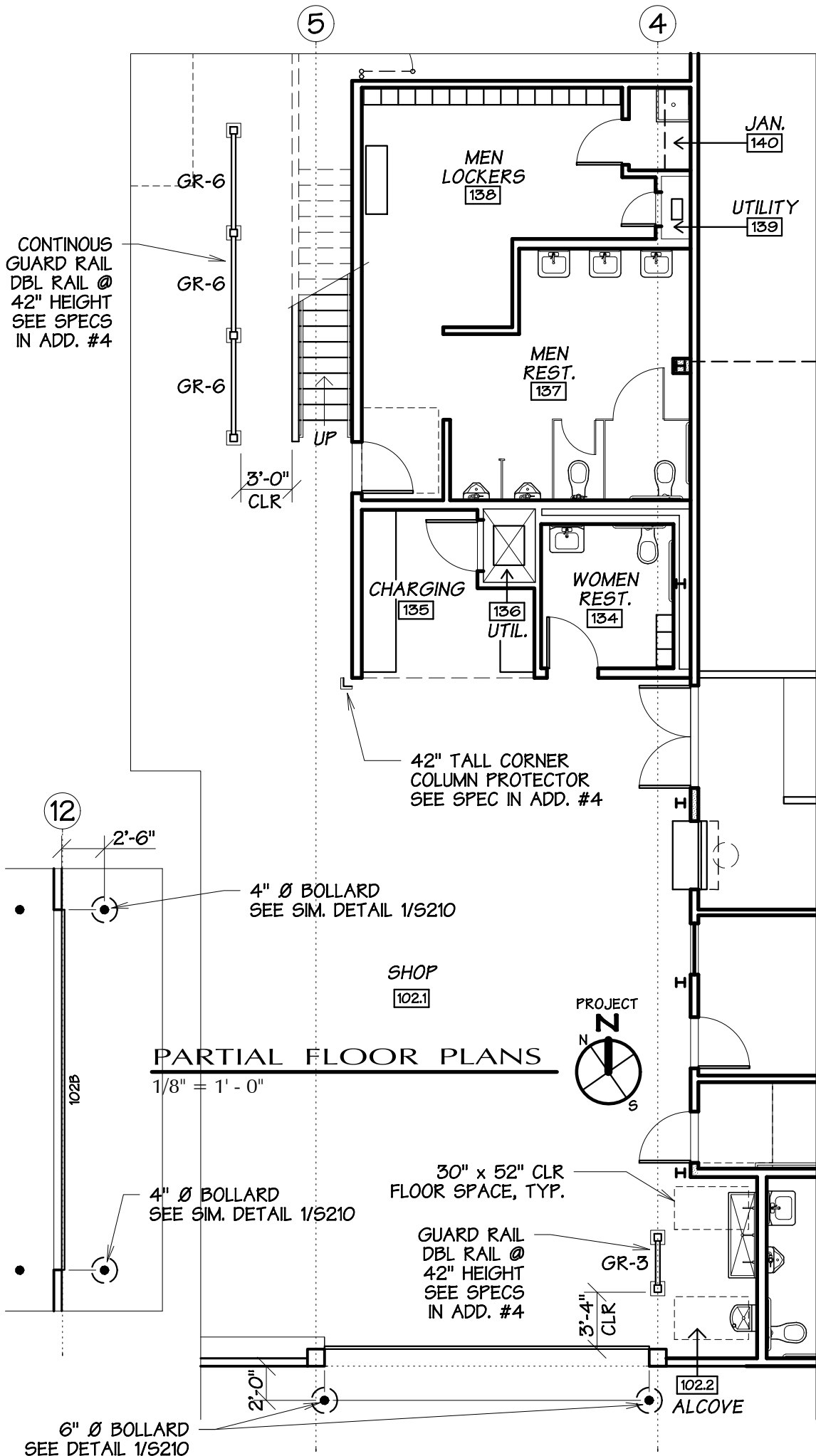
3.01 ELECTRIC UNIT HEATER

- A. Suspend from structure with 5/8-inch diameter rods and per manufacturer instructions.
- B. Install thermostat as shown on drawings. Provide control wiring from thermostat to unit.

3.02 ELECTRIC WALL HEATERS

- A. Install per manufacturer's instructions. Comply with NEC and UL listings.
- B. Install heaters in place with box trim flush with finished wall.
- C. Install thermostat as shown on drawings. Provide control wiring from thermostat to unit.

END OF SECTION



PARTIAL FLOOR PLANS

1/8" = 1' - 0"

Building Remodel
Papé Properties Inc.
 Cosmopolis, Washington

Harbor Architects LLC
 Harbor Place
 345 West Wishkah Street
 Aberdeen WA 98520
 Phone 360-532-0980
 harborarchitects.com
 © 2024 Harbor Architects LLC All Rights Reserved

project number	22-22
date	4.25.24
file name	BID A213-Add 4
drawn by	ACG
title	Guard Rail & Additional Bollard Locations
	Addendum #4
1	of 1

- ### WIRING METHODS
- WHERE USED, THE WORD "PROVIDE" MEANS TO FURNISH AND INSTALL, COMPLETE AND READY FOR ITS INTENDED USE.
 - PROVIDE COPPER WIRING IN CONDUIT UNO. ALUMINUM WIRING IS ALLOWED FOR FEEDERS OVER 100A RATING. REFER TO FEEDER SCHEDULE. CONDUCTOR MINIMUM SIZE IS 12 AWG UNO.
 - PROVIDE EMT CONDUIT ABOVEGROUND. PROVIDE RIGID PVC CONDUIT BELOW GRADE OR WHERE ENCASED IN CONCRETE.
 - TYPE MC CABLE IS ALLOWED FOR BRANCH CIRCUITS WHERE CONCEALED ABOVE ACCESSIBLE CEILINGS AND IN HOLLOW STUD WALLS.
 - PROVIDE WEATHERPROOF RACEWAY AND FITTINGS IN EXTERIOR LOCATIONS.
 - PROVIDE FLEXIBLE CONDUIT WHIPS FOR CONNECTIONS TO MOTORIZED EQUIPMENT.
 - PROVIDE METALLIC BOXES.
 - PROVIDE SEISMIC RESTRAINT COMPONENT DESIGN AND INSTALLATION FOR THE ELECTRICAL SYSTEM, AS REQUIRED BY THE AHJ.
 - ALL LUMINAIRES ARE TO BE SUPPORTED BY THE BUILDING STRUCTURE.
 - PROVIDE PERMANENT IDENTIFICATION NAMEPLATE LABELS FOR ALL ELECTRICAL SWITCHBOARDS, PANELBOARDS, AND ENCLOSED SWITCHES TO IDENTIFY ITS DESIGNATION OR THE EQUIPMENT SERVED. PROVIDE ALL LABELS AND PLACARDS AS REQUIRED BY NEC AND THE SERVING UTILITY.
 - WIRING DEVICE COLOR: PROVIDE WHITE DEVICES UNO.
 - DEVICE WALL PLATES: FOR BACK OF HOUSE MECHANICAL, ELECTRICAL, AND TRASH ROOMS, PROVIDE GALVANIZED STEEL. FOR ALL OTHER AREAS, PROVIDE WHITE THERMOPLASTIC.

DESIGN BUILD SYSTEMS

CONTRACTOR SHALL PROVIDE THE FOLLOWING SYSTEMS VIA DESIGN-BUILD DELIVERY METHOD. ELECTRICAL PLANS MAY SHOW DEVICE LOCATIONS AND SYSTEM LAYOUT FOR DESIGN INTENT ONLY. DESIGN-BUILD CONTRACTOR SHALL PROVIDE SHOP DRAWING AND EQUIPMENT SUBMITTALS FOR REVIEW AND APPROVAL PRIOR TO COMMENCING WORK.

COMMUNICATIONS SYSTEM (PHONE/DATA/STRUCTURED CABLING):
DESIGN, FURNISH, AND INSTALL A COMPLETE AND FUNCTIONING COMMUNICATIONS SYSTEM, INCLUDING BUT NOT LIMITED TO ALL CABLING, OUTLET DEVICES, CABLE MANAGEMENT SYSTEMS, TERMINATIONS, AND COORDINATION WITH SERVING UTILITIES. CONTRACTOR IS RESPONSIBLE FOR ENTIRETY OF SYSTEM BEYOND THE SERVING UTILITY POINT OF DEMARCATION. CABLING IS TO BE IN RACEWAY WHERE NOTED ON PLANS, OTHERWISE OPEN CABLING IS ALLOWED. PROVIDE FUNCTIONAL TESTING AND MAKE ALL NECESSARY REPAIRS.

FIRE ALARM SYSTEM:
DESIGN, FURNISH, AND INSTALL A COMPLETE AND FUNCTIONING FIRE ALARM SYSTEM COMPLYING WITH NFPA 72 AND ALL LOCAL CODES, ORDINANCES, AND JURISDICTION REQUIREMENTS. CONTRACTOR IS RESPONSIBLE FOR ENTIRETY OF THE SYSTEM, INCLUDING BUT NOT LIMITED TO ALL CABLING, INITIATING AND MONITORING DEVICES, NOTIFICATION APPLIANCES, CONTROL PANELS, POWER SUPPLIES, AND INTERFACING RELAYS. PROVIDE APPROVED MEANS OF SYSTEM MONITORING BY REMOTE CENTRAL STATION. SUBMIT SHOP DRAWINGS AND OBTAIN PERMITS AND APPROVALS FROM AHJ. UPON COMPLETION, OBTAIN FINAL INSPECTION AND SIGNOFF FROM AHJ.

POWER SEQUENCING NARRATIVE

IT IS EXPECTED THAT THE 1200A METERING SWITCHBOARD MAY HAVE A 12-MONTH LEAD TIME. CONTRACTOR SHALL LEAVE THE EXISTING 1200A SERVICE EQUIPMENT IN PLACE DURING CONSTRUCTION TO BE USED AS TEMPORARY POWER. CONTRACTOR SHALL PROCEED WITH ALL NEW WORK PER PLANS WHILE LEAVING THE EXISTING 1200A SERVICE INTACT. WHEN THE NEW METERING SWITCHBOARD IS AVAILABLE, PERMANENT POWER SHALL BE TRANSITIONED TO THE NEW SERVICE EQUIPMENT AND THE EXISTING SERVICE / UTILITY TRANSFORMER SHALL BE REMOVED. CONTRACTOR SHALL COORDINATE WITH THE PUD FOR TIMING / SEQUENCING OF DEMOLITION WORK AND NEW WORK. CONTRACTOR IS RESPONSIBLE FOR PROVIDING TEMPORARY POWER DURING CONSTRUCTION AND OBTAINING NECESSARY PERMITS FOR SAID TEMPORARY POWER. CONTRACTOR SHALL KEEP THE OWNER INFORMED OF THE SWITCHBOARD DELIVERY DATE. IF THE DELIVERY DATE WILL BE PAST THE DATE OF CONSTRUCTION COMPLETION, CONTRACTOR SHALL PROVIDE A SOLUTION TO TEMPORARILY POWER THE NEW MAIN DISTRIBUTION PANEL WITH THE EXISTING SERVICE.

- ### RECEPTACLE SYMBOLS LEGEND
- SINGLE RECEPTACLE
 - DUPLEX RECEPTACLE
 - DOUBLE DUPLEX RECEPTACLE
 - DUPLEX RECEPTACLE ABOVE COUNTER
 - DOUBLE DUPLEX RECEPTACLE ABOVE COUNTER
 - DUPLEX RECEPTACLE W/ GFCI
 - DOUBLE DUPLEX RECEPTACLE W/ GFCI
 - DUPLEX RECEPTACLE W/ GFCI ABOVE COUNTER
 - DOUBLE DUPLEX RECEPTACLE W/ GFCI ABOVE COUNTER
 - DUPLEX RECEPTACLE ON CEILING
 - DOUBLE DUPLEX RECEPTACLE ON CEILING
 - DUPLEX RECEPTACLE, HALF SWITCHED
 - DUPLEX RECEPTACLE, FULL SWITCHED
 - SPECIAL PURPOSE RECEPTACLE, VERIFY NEMA CONFIGURATION
 - SPECIAL PURPOSE RECEPTACLE ON CEILING, VERIFY NEMA CONFIGURATION
 - RECEPTACLE W/ CEILING CORD DROP
 - FLOORBOX W/ DUPLEX RECEPTACLE
 - FLOORBOX W/ DOUBLE DUPLEX RECEPTACLE
 - COMBINATION FLOORBOX W/ POWER AND LOW VOLTAGE

- ### CONNECTIONS/EQUIPMENT SYMBOLS LEGEND
- EQUIPMENT ELECTRICAL CONNECTION
 - MOTOR CONNECTION
 - MOTOR RATED SWITCH W/ THERMAL OVERLOAD
 - DISCONNECT SWITCH
 - FUSED DISCONNECT SWITCH
 - JUNCTION BOX
 - LINE VOLTAGE THERMOSTAT
 - UTILITY METER
 - EQUIPMENT CABINET AS NOTED
 - ELECTRIC WALL HEATER
 - BRANCH PANEL RECESSED
 - BRANCH PANEL SURFACE
 - TRANSFORMER
 - SWITCHBOARD

- ### ONE-LINE SYMBOLS LEGEND
- CIRCUIT BREAKER
 - BUS DUCT PLUG-IN CIRCUIT BREAKER
 - FUSED SWITCH
 - CURRENT TRANSFORMERS
 - GROUND CONNECTION
 - CONDUIT CONTINUATION
 - CONDUIT CAP
 - FEEDER CALLOUT
 - SURGE PROTECTIVE DEVICE
 - AUTOMATIC TRANSFER SWITCH
 - TRANSFORMER
 - ELECTRICITY METER
 - GENERATOR

TECHNOLOGY DEVICE ROUGH-IN SCHEDULE

DEVICE	BACK BOX	MUD RING	CONDUIT	NOTES
TELECOM OUTLET	4"SQ, 2-1/8"D	1-GANG	1"	1
TV OUTLET	4"SQ, 2-1/8"D	1-GANG	1"	1
A/V OUTLET	4-11/16"SQ	2-GANG	1-1/4"	1,2
SECURITY DEVICE	4"SQ, 2-1/8"D	1-GANG	3/4"	1,2

*ALL ROUGH-INS ARE TYPICAL UNO ON PLANS

NOTES:
1. USE PLASTIC BUSHING AT CONDUIT TERMINATION IN ACCESSIBLE SPACE.
2. REFER TO ROUGH-IN DETAILS FOR MORE INFORMATION.
3. FOR DWELLING UNITS ONLY, PROVIDE CABLE RACEWAY TO ACCESSIBLE CEILING SPACE NOT REQUIRED.

- ### LIGHTING SYMBOLS LEGEND
- NOTE: SHADDED LUMINAIRE INDICATES EMERGENCY POWER
- RECESSED DOWNLIGHT - ROUND/SQUARE
 - SURFACE DOWNLIGHT - ROUND/SQUARE
 - PENDANT OR FLUSH MOUNT LUMINAIRE
 - LINEAR RECESSED LUMINAIRE
 - LINEAR SURFACE LUMINAIRE
 - LINEAR PENDANT LUMINAIRE
 - LINEAR WALL LUMINAIRE
 - LINEAR STRIP LUMINAIRE
 - CONTINUOUS TAPE OR UNDERCABINET LUMINAIRE
 - RECESSED HEAT LAMP
 - RECESSED 2x2 LUMINAIRE
 - RECESSED 2x4 LUMINAIRE
 - SURFACE OR PENDANT 2x2 LUMINAIRE
 - SURFACE OR PENDANT 2x4 LUMINAIRE
 - WALL MOUNTED LUMINAIRE
 - RECESSED STEP LIGHT
 - GROUND MOUNT FLOOD
 - POLE MOUNTED AREA LUMINAIRE
 - BOLLARD OR POST TOP LUMINAIRE
 - EMERGENCY BUGEYE
 - EXIT SIGN, SHADING INDICATES FACES, ARROWS PER PLAN
- TYPICAL LUMINAIRE LABELING**
-

- ### LIGHTING CONTROLS SYMBOLS LEGEND
- NOTE: ANY COMBINATION OF LETTERS MAY APPLY TO A SWITCH FOR MULTIPLE FUNCTIONS
- STANDARD SWITCH
 - STANDARD SWITCH W/ SWITCHING SUBSCRIPT
 - 3-WAY SWITCH
 - 4-WAY SWITCH
 - LOW VOLTAGE SWITCH
 - LOW VOLTAGE SWITCH PER SCHEDULE
 - OCCUPANCY SENSOR SWITCH
 - KEYED SWITCH
 - DIMMER SWITCH
 - TIMER SWITCH
 - OCCUPANCY SENSOR CEILING MOUNT
 - PHOTOCELL CEILING MOUNT
 - OCCUPANCY SENSOR WALL MOUNT
 - PHOTOCELL WALL MOUNT

- ### TECHNOLOGY SYMBOLS LEGEND
- TELECOMMUNICATIONS OUTLET, PROVIDE BACKBOX AND CONDUIT/PULL STRING TO ACCESSIBLE SPACE. PROVIDE (3) CAT 6A CABLES, UNO.
 - WIRELESS ACCESS POINT, PROVIDE BACKBOX AND CONDUIT/PULL STRING TO ACCESSIBLE SPACE. PROVIDE (1) CAT 6A CABLE
 - CABLE TV OUTLET, PROVIDE BACKBOX AND CONDUIT/PULL STRING TO ACCESSIBLE SPACE. (1) COAXIAL CABLE.
 - PAGING SPEAKER CONNECTION, PROVIDE BACKBOX AND CONDUIT/PULL STRING TO ACCESSIBLE SPACE. PROVIDE (1) 18-2 CABLE
 - PAGING HORN CONNECTION, PROVIDE BACKBOX AND CONDUIT/PULL STRING TO ACCESSIBLE SPACE. PROVIDE (1) 18-2 CABLE

- ### SECURITY DEVICES SYMBOLS LEGEND
- CARD READER, PROVIDE BACK BOX AND CONDUIT ROUGH-IN
 - DOOR CONTACT, PROVIDE CONDUIT ROUGH-IN
 - ELECTRIC STRIKE, PROVIDE CONDUIT ROUGH-IN
 - MOTION DETECTOR, PROVIDE BACK BOX AND CONDUIT ROUGH-IN
 - TELEPHONE ENTRY SYSTEM, PROVIDE BACK BOX AND CONDUIT ROUGH-IN
 - PUSH BUTTON / DOOR OPERATOR

- ### FIRE ALARM DEVICES SYMBOLS LEGEND
- 120V DWELLING UNIT SMOKE DETECTOR
 - 120V DWELLING UNIT COMBINATION CARBON MONOXIDE/SMOKE DETECTOR
 - 120V MAGNETIC DOOR HOLD

- ### ABBREVIATIONS
- | | |
|-------|--------------------------------------|
| A | AMPERES |
| AFCI | ARC FAULT CIRCUIT INTERRUPTER |
| AFF | ABOVE FINISHED FLOOR |
| AIC | AMPERE INTERRUPTING CAPACITY |
| AL | ALUMINUM |
| ATS | AUTOMATIC TRANSFER SWITCH |
| AWG | AMERICAN WIRE GAUGE |
| AV | AUDIO VISUAL |
| BKR | BREAKER |
| C | CONDUIT |
| CKT | CIRCUIT |
| CO | CONDUIT ONLY |
| CU | COPPER |
| CLG | CEILING |
| CT | CURRENT TRANSFORMER |
| DAS | DISTRIBUTED ANTENNA SYSTEM |
| DIA | DIAMETER |
| (E) | EXISTING |
| EGC | EQUIPMENT GROUNDING CONDUCTOR |
| ERRCS | EMERGENCY RESPONDER RADIO COVERAGE |
| F | FUSE |
| FACP | FIRE ALARM CONTROL PANEL |
| FC | FOOT CANDLE |
| FLA | FULL LOAD AMPERES |
| FSD | FIRE SMOKE DAMPER |
| GEC | GROUNDING ELECTRODE CONDUCTOR |
| GFCI | GROUND FAULT CIRCUIT INTERRUPTER |
| GFPE | GROUND FAULT PROTECTION OF EQUIPMENT |
| HP | HORSEPOWER |
| IDF | INTERMEDIATE DISTRIBUTION FRAME |
| IG | ISOLATED GROUND |
| KCML | THOUSAND CIRCULAR MIL |
| KVA | KILOVOLT-AMP |
| KW | KILOWATT |
| LTC | LIGHTING |
| MCA | MINIMUM CIRCUIT AMPERES |
| MCB | MAIN CIRCUIT BREAKER |
| MCC | MOTOR CONTROL CENTER |
| MDF | MAIN DISTRIBUTION FRAME |
| MDP | MAIN DISTRIBUTION PANEL |
| MDU | MEDIA DISTRIBUTION UNIT |
| MIN | MINIMUM |
| MLO | MAIN LUG ONLY |
| MOC | MAXIMUM OVERCURRENT PROTECTION |
| MTS | MANUAL TRANSFER SWITCH |
| (N) | NEW |
| NAC | NOTIFICATION APPLIANCE CIRCUIT |
| OC | ON CENTER |
| P | POLE |
| PH | PHASE |
| PNL | PANEL |
| PPWR | POWER |
| (R) | RELOCATE |
| ROW | RIGHT-OF-WAY |
| S | SWITCH |
| SDP | SUB-DISTRIBUTION PANEL |
| SM | SIMILAR |
| SPD | SURGE PROTECTIVE DEVICE |
| TR | TAMPER RESISTANT |
| TYP | TYPICAL |
| UNO | UNLESS NOTED OTHERWISE |
| UPS | UNINTERRUPTIBLE POWER SUPPLY |
| V | VOLTS |
| VA | VOLT-AMPERES |
| VFD | VARIABLE FREQUENCY DRIVE |
| W | WIRE |
| WP | WEATHERPROOF |
| (X) | DEMOLISH |
| XFMR | TRANSFORMER |

TYPICAL DEVICE MOUNTING HEIGHTS

RECEPTACLES	+18" AFF
RECEPTACLES, ABOVE COUNTER	+6" ABOVE COUNTER, +46" AFF MAX, COORDINATE WITH CASEWORK
PHONE/DATA/CATV OUTLET	+18" AFF
SWITCHES	+46" AFF
THERMOSTATS	+46" AFF
CARD READERS	+46" AFF
PANELBOARDS	+72" TO TOP OR PER NEC 404.8
RESIDENTIAL PANEL	+48" TO HIGHEST OPERABLE CONTROL
CONTROL PANELS	+72" TO TOP

NOTES:
1. MEASUREMENTS ARE TYPICAL UNO ON PLANS
2. MEASUREMENTS ARE TO CENTER OF BOX UNO
3. COMPLY WITH ALL ADA ACCESSIBILITY GUIDELINES

- ### GENERAL SYMBOLS LEGEND
- MECHANICAL OR PLUMBING EQUIPMENT TAG
 - BUILDING EQUIPMENT TAG
 - KEYNOTE OR SCOPE NOTE:
= KEYNOTE
N = NEW
E = EXISTING
X = DEMOLISH
R = RELOCATE
 - REVISION TAG
 - REVISION CLOUD
 - DETAIL/PLAN CALLOUT
 - NORTH ARROW
 - MATCHLINE

*NOTE:
ALL OF GENERAL NOTES ON THIS SHEET ARE TO BE APPLIED TO ALL OTHER DRAWINGS IN THIS SET. THE SYMBOLS AND ABBREVIATIONS SHOWN ON THIS SHEET MAY OR MAY NOT BE USED IN THIS SET OF DRAWINGS.

- ### GENERAL PROJECT NOTES
- COMPLETED INSTALLATION SHALL COMPLY WITH NEC AND ALL LOCAL LAWS, ORDINANCES, AND REGULATIONS.
 - CODE BASIS OF DESIGN: 2020 NATIONAL ELECTRICAL CODE WITH WASHINGTON STATE MODIFICATIONS (NFPA 70), 2018 INTERNATIONAL BUILDING CODE, 2018 WASHINGTON STATE ENERGY CODE.
 - PLANS ARE DIAGRAMMATIC IN NATURE TO COMMUNICATE SCOPE OF WORK AND GENERAL INTENT. CONTRACTOR SHALL PROVIDE ALL FITTINGS, BOXES, AND APPURTENANCES NECESSARY FOR A COMPLETE AND OPERABLE ELECTRICAL SYSTEM.
 - DEVICE LOCATIONS ON PLANS MAY NOT BE EXACT. REFER TO ARCHITECTURAL PLANS FOR MORE DETAILED INFORMATION REGARDING DIMENSIONS AND LAYOUTS. COORDINATE ALL DEVICE AND EQUIPMENT LOCATIONS WITH ARCHITECTURAL AND OTHER TRADES.
 - EQUIPMENT FOR OTHER DISCIPLINES MAY BE SHOWN FOR REFERENCE ONLY. REFER TO OTHER DISCIPLINES' DRAWINGS FOR MORE DETAIL REGARDING EQUIPMENT SPECIFICATIONS AND INFORMATION.
 - PLANS SHALL GOVERN IN MATTERS OF QUANTITY. SPECIFICATIONS SHALL GOVERN IN MATTERS OF QUALITY. IN CASE OF DISCREPANCY BETWEEN DRAWINGS AND SPECIFICATIONS, THE SPECIFICATIONS SHALL GOVERN. PLANS ARE TO BE TIED TO SPECIFICATIONS FOR A COMPLETE DESIGN PACKAGE.
 - ANYTHING MENTIONED IN THE SPECIFICATIONS AND NOT SHOWN ON THE DRAWINGS, OR SHOWN ON THE DRAWINGS AND NOT MENTIONED IN THE SPECIFICATIONS, SHALL BE OF LIKE EFFECT AS IF SHOWN OR MENTIONED IN BOTH.
 - WIRE SIZE AND QUANTITIES ARE NOT GENERALLY INDICATED ON PLANS. FOR A TYPICAL 20A/1P CIRCUIT BREAKER, PROVIDE (3) #12 CU CONDUCTORS (PHASE, NEUTRAL, GROUND). FOR A TYPICAL 20A/2P CIRCUIT BREAKER, PROVIDE (3) #12 CU CONDUCTORS (PHASE, GROUND). FOR A TYPICAL 20A/3P CIRCUIT BREAKER, PROVIDE (4) #12 CU CONDUCTORS (THREE PHASES PLUS GROUND).
 - TO COMPENSATE FOR VOLTAGE DROP, ON 20A, 120V CIRCUITS; OVER 100 FEET, PROVIDE #10 AWG, OVER 150 FEET, PROVIDE #8 AWG. ON 20A, 277V CIRCUITS; OVER 250 FEET, PROVIDE #10 AWG.
 - CIRCUIT NUMBERS ARE GENERALLY INDICATED AS XX-## WHERE (XX) INDICATES PANEL NAME AND (##) INDICATES THE CIRCUIT NUMBER. IN SOME CASES THE PANEL MAY BE COMMON TO A LARGE AREA, AND THE CIRCUIT NUMBER ONLY MAY BE CALLED OUT ON THE PLANS.
 - MAINTAIN AT LEAST 12" SEPARATION BETWEEN POWER AND COMMUNICATIONS WIRING ROUTED PARALLEL. SMALLER SEPARATION MAY BE ALLOWED WHEN CROSSING.
 - PROVIDE FIRE STOPPING FOR ALL PENETRATIONS OF FIRE RATED ASSEMBLIES. FIRE STOPPING MUST BE EQUIVALENT OR HIGHER TO THAT OF THE PENETRATED ASSEMBLY. REFER TO ARCHITECTURAL PLANS.
 - REFER TO ARCHITECTURAL PLANS FOR FIRE RATED ASSEMBLIES. MAINTAIN 24" SEPARATION BETWEEN DEVICES IN FIRE-RATED WALLS. PROVIDE FIRE-RATED BOXES OR "PUTTY PADS" AS REQUIRED TO MAINTAIN FIRE RATING.
 - REFER TO ARCHITECTURAL PLANS FOR ACOUSTIC ASSEMBLIES. PROVIDE ACOUSTIC BOXES OR "PUTTY PADS" AS REQUIRED TO MAINTAIN ACOUSTIC RATING.
 - ELECTRICAL EQUIPMENT IS DESIGNED BASED ON A SPECIFIC MANUFACTURER. VERIFY FINAL CLEARANCES AND SPACE REQUIREMENTS WITH EQUIPMENT SUBMITTALS. THE CONTRACTOR IS RESPONSIBLE FOR ANY REVISION OR RELOCATION OF EQUIPMENT IF APPROVED EQUIPMENT DOES NOT MATCH BASIS OF DESIGN.
 - PROVIDE 4" HIGH CONCRETE "HOUSEKEEPING PADS" FOR FREE STANDING AND FLOOR MOUNTED ELECTRICAL EQUIPMENT.
 - ALL CONDUIT ROUTING SHALL FOLLOW BUILDING LINES WHERE POSSIBLE. COORDINATE ROUTING WITH ARCHITECTURAL ELEMENTS. ALL ROUTING OF EXPOSED CONDUITS SHALL BE APPROVED BY THE ARCHITECT.
 - ALL LIFE SAFETY WIRING SHALL BE READILY IDENTIFIED AS SUCH AND SHALL BE ROUTED ENTIRELY INDEPENDENTLY OF NORMAL WIRING.
 - LIGHTING CONTROL: PLANS ARE DIAGRAMMATIC TO SHOW GENERAL INTENT. ALL LIGHTING CONTROL DEVICES MAY NOT BE SHOWN ON THE PLANS. REFER TO LIGHTING CONTROL NARRATIVE FOR DETAILED INFORMATION REGARDING FUNCTIONALITY.
 - COORDINATE UNDERGROUND CONDUIT ROUTING WITH CIVIL AND STRUCTURAL PLANS.
 - CONSULT STRUCTURAL ENGINEER OF RECORD FOR ALL STRUCTURAL PENETRATIONS.

- ### ELECTRICAL SHEET INDEX
- E001 COVER SHEET - ELECTRICAL
 - E002 SCHEDULES - LIGHTING
 - E003 SCHEDULES - EQUIPMENT
 - E100 SITE PLAN - ELECTRICAL
 - ED201 LOWER FLOOR - ELECTRICAL - DEMO
 - ED202 OFFICE/UPPER FLOOR - ELECTRICAL - DEMO
 - E201 LOWER FLOOR - POWER
 - E202 OFFICE/UPPER FLOOR - POWER
 - E301 LOWER FLOOR - LIGHTING
 - E302 OFFICE/UPPER FLOOR - LIGHTING
 - E501 DETAILS - ELECTRICAL
 - E601 ONE-LINE DIAGRAM - ELECTRICAL
 - E701 PANEL SCHEDULES - ELECTRICAL
 - E702 PANEL SCHEDULES - ELECTRICAL



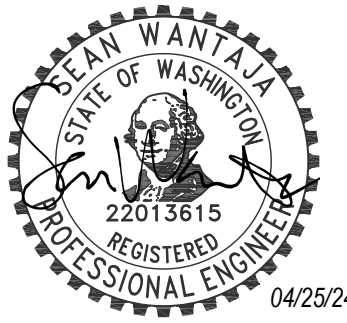
Pape Kenworth Renovation
Cosmopolis, WA

BID / CD SET
Date: 03/29/2024
Revisions:
2 04/25/2024 ADDENDUM 04

Reviewed by: SEW
Designed by: JY
Drawn by: JRM

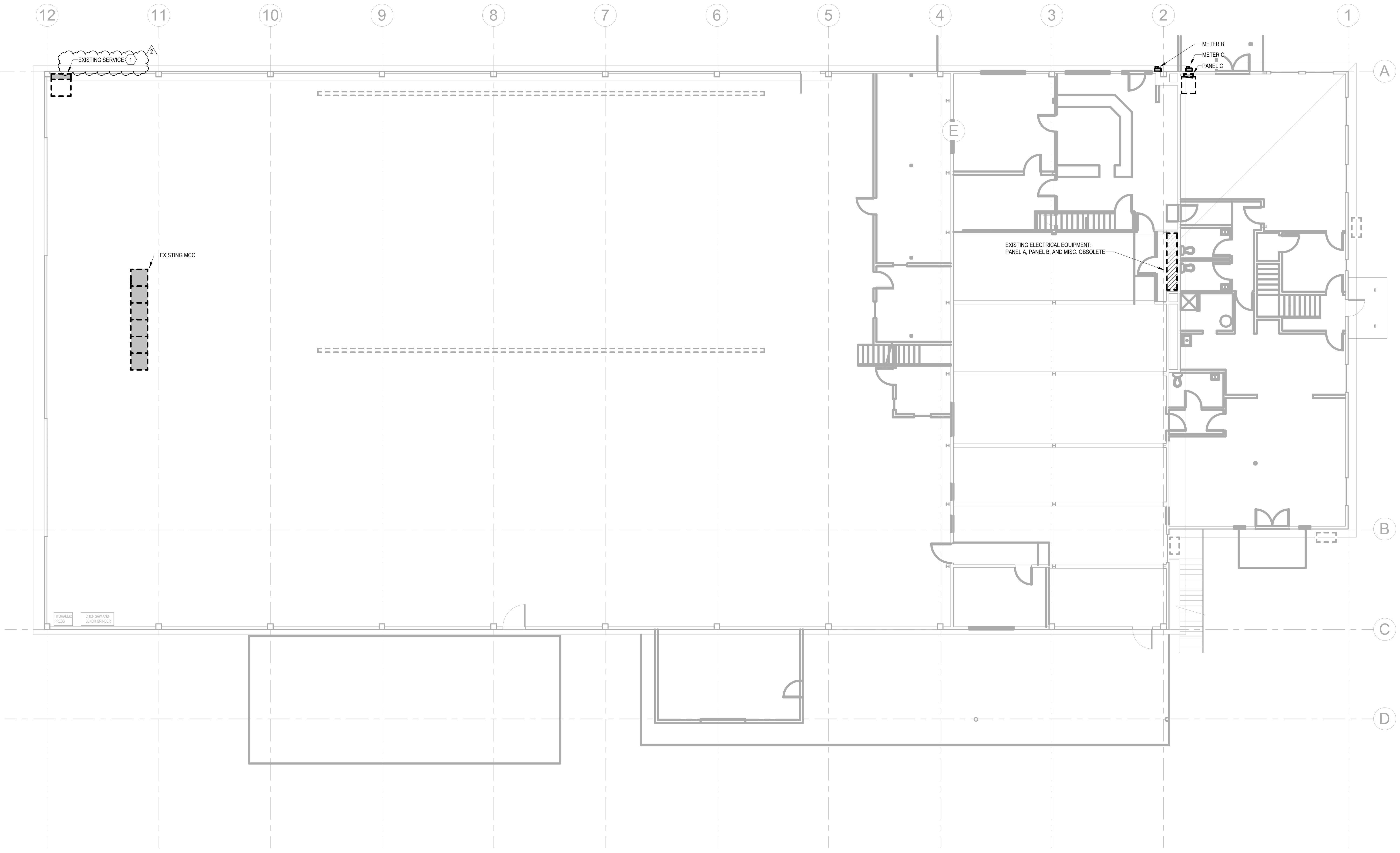
COVER SHEET - ELECTRICAL

E001



KEYNOTES
1 PROVIDE POWER AND DATA TO WALL MOUNTED TELEVISION, COORDINATE EXACT LOCATION AND MOUNTING HEIGHT WITH ARCHITECT.

- DEMOLITION NOTES**
- A. ALL EQUIPMENT SHOWN IN PLAN IS EXISTING. POWER DEVICES AND LIGHTING OMITTED FROM DRAWING DUE TO LACK OF AS-BUILT DOCUMENTATION. MAJOR EQUIPMENT / SCOPE AREAS IDENTIFIED IN PLANS. PROVIDE A COST PER SF ALLOWANCE FOR BIDDING PURPOSES.
 - B. REMOVE ALL EXISTING ELECTRICAL SERVICE EQUIPMENT. REFER TO POWER PLANS FOR NEW DEDICATED ELECTRICAL DISTRIBUTION.
 - C. SALVAGE MAJOR CONDUIT RUNS FROM SHOP TO OFFICE THAT MAY BENEFIT THE NEW ELECTRICAL SERVICE CONFIGURATION. ABANDON OBSOLETE UG CONDUITS IN PLACE AND REMOVE WIRING.
 - D. DUE TO EXTERIOR ENVELOPE REMODEL, REMOVE ALL BUILDING MOUNTED LIGHTING IN PREPARATION FOR NEW BUILDING MOUNTED LIGHTING.
 - E. REMOVE ALL LIGHTING AND POWER DEVICES IN SHOP, OFFICE, AND TENANT SPACES IN PREPARATION FOR NEW PROGRAMMING.



1 LOWER FLOOR - ELECTRICAL - DEMO
SCALE: 1/8" = 1'-0"

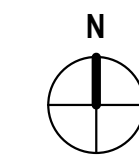
Pape Kenworth Renovation
Cosmopolis, WA

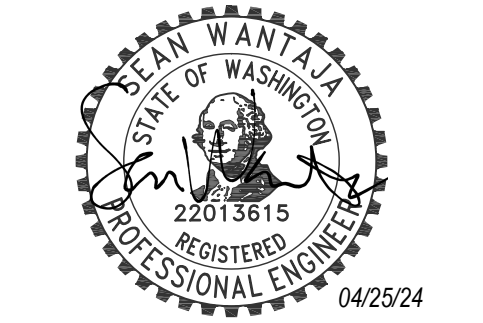
BID / CD SET
Date: 03/29/2024
Revisions:
2 04/25/2024 ADDENDUM 04

Reviewed by: SEW
Designed by: JY
Drawn by: JRM

LOWER FLOOR - ELECTRICAL - DEMO

ED201





KEYNOTES

- 1 PROVIDE PANIC HARDWARE FOR ELECTRICAL ROOM DOORS.
- 2 PROVIDE (1) 3/4" AND (4) 1" C FOR DATA STUBS INTO THE BACK OF DESK. PROVIDE JUNCTION BOXES AND FLEX CONDUIT TO POWER DEVICES AS REQUIRED FOR POWER DEVICE INSTALLATION. PROVIDE AND INSTALL CATEGORY CABLE IN DESK WITH CABLE TIES.
- 3 LOW VOLTAGE DEMARCATION. PROVIDE MINIMUM 4'X8' SHEET OF 3/4" FIRE-RATED PLYWOOD. PROVIDE COPPER GROUND BAR AND CONNECTION TO BUILDING GROUND SYSTEM. REFER TO GROUNDING DETAIL ON SHEET E501.
- 4 PROVIDE POWER TO WALL MOUNTED MICROWAVE, MOUNT AT +53" AFF. VERIFY EXACT LOCATION AND MOUNTING HEIGHT WITH ARCHITECT.
- 5 PROVIDE POWER FOR FIRE ALARM / LOW VOLTAGE PANELS.
- 6 PROVIDE POWER AND DATA TO WALL MOUNTED TELEVISION, COORDINATE EXACT LOCATION AND MOUNTING HEIGHT WITH ARCHITECT.

KEYNOTES

- 7 EXTEND TELECOM SERVICE CONDUIT INTO ROOM. REFER TO SITE PLAN FOR CONTINUATION.
- 8 PROVIDE PLUGMOLD AT WORKSPACE COUNTER. PROVIDE PLUGMOLD WITH RECEPTACLE SPACED 1'-0" O.C.
- 9 PROVIDE POWER TO CORD REEL. COORDINATE EXACT MOUNTING HEIGHT AND LOCATION WITH ARCHITECT. CORD REEL PROVIDED BY OTHERS.
- 10 PROVIDE ROUGH-IN FOR FUTURE WATER MAZE EQUIPMENT. PROVIDE (1) 1" C TO MAIN ELECTRICAL ROOM. LABEL CONDUIT ON BOTH ENDS FOR FUTURE USE.

KEYNOTES

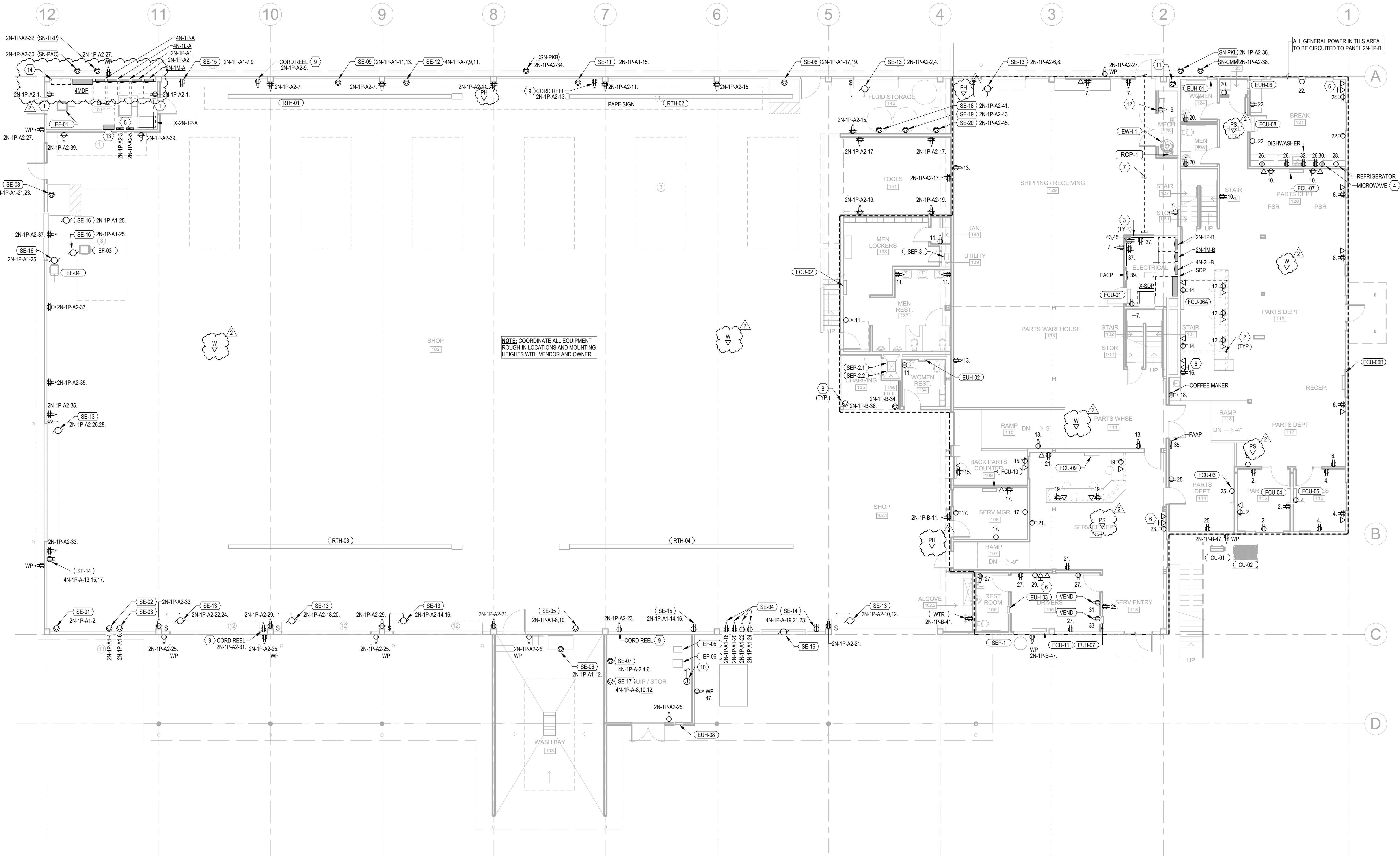
- 11 MAINTAIN POWER FOR EXISTING SUMP PUMP. CONTRACTOR SHALL VERIFY VOLTAGE AND WIRING REQUIREMENTS. PROVIDE NEW CIRCUIT FROM OFFICE ELECTRICAL ROOM PANEL.
- 12 PROVIDE DEDICATED 120V/20A CIRCUIT FOR DRY PIPE AIR COMPRESSOR.
- 13 EMERGENCY LIGHTING INVERTER, FURNISHED BY CES, INSTALLED BY CONTRACTOR.
- 14 EXISTING SERVICE EQUIPMENT TO REMAIN IN PLACE DURING CONSTRUCTION FOR USE AS TEMPORARY POWER. REFER TO NARRATIVE ON SHEET E001.

ARCHITECTURAL COORDINATION NOTES

- A PROVIDE FIRE STOPPING FOR ALL PENETRATIONS OF FIRE RATED ASSEMBLIES. FIRE PROOFING MUST BE EQUIVALENT OR HIGHER TO THAT OF THE PENETRATED ASSEMBLY. REFER TO ARCHITECTURAL PLANS.
- B REFER TO ARCHITECTURAL PLANS FOR FIRE RATED ASSEMBLIES. MAINTAIN 2" SEPARATION BETWEEN DEVICES IN FIRE-RATED WALLS. PROVIDE FIRE-RATED BOXES OR 'PUTTY PADS' AS REQUIRED TO MAINTAIN FIRE RATING.
- C REFER TO ARCHITECTURAL PLANS FOR ACOUSTIC ASSEMBLIES. PROVIDE ACOUSTIC BOXES OR 'PUTTY PADS' AS REQUIRED TO MAINTAIN ACOUSTIC RATING.
- D IN FRONT OF HOUSE SPACES, COORDINATE EXACT MOUNTING HEIGHT AND LOCATION OF ALL DEVICES AND EQUIPMENT WITH ARCHITECTURAL PLANS PRIOR TO ROUGH-IN. EXAMPLE: BREAK ROOM KITCHENETTES, DEVICES IN OR ABOVE CASEWORK, AND DISPLAYS.

GENERAL ELECTRICAL NOTES

- A ALL EQUIPMENT AND DEVICES SHOWN IN PLAN ARE NEW UNLESS NOTED OTHERWISE. MECHANICAL AND PLUMBING EQUIPMENT SHOWN IN BOLD FOR REFERENCE. REFER TO MECHANICAL AND PLUMBING EQUIPMENT SCHEDULE FOR CONNECTION CHARACTERISTICS AND ADDITIONAL INSTALLATION DETAILS.
- B PLANS ARE DIAGRAMMATIC IN NATURE TO COMMUNICATE SCOPE OF WORK AND GENERAL INTENT AND SHALL NOT BE USED FOR EXACT DIMENSIONS.
- C PROVIDE ROUGH-IN BACKBOX AND 1" CONDUIT ROUTED TO ACCESSIBLE CEILING SPACE FOR ALL DATA OUTLETS.
- D ALL RECEPTACLES AT OFFICE DESKS SERVING COMPUTERS SHALL BE CONTROLLED VIA LIGHTING VACANCY SENSOR. PROVIDE POWER PACKS INSTALLED IN ACCESSIBLE CEILING SPACE OR WIRELESS POWER DEVICES AS REQUIRED TO MEET CODE MINIMUM CONTROLS.
- E MAINTAIN AT LEAST 12" SEPARATION BETWEEN POWER AND COMMUNICATIONS WIRING ROUTED PARALLEL. SMALLER SEPARATION MAY BE ALLOWED WHEN CROSSING.
- F ALL CONDUIT ROUTING SHALL FOLLOW BUILDING LINES WHERE POSSIBLE AND BE FULLY CONCEALED, EXCLUDING THE PARKING GARAGE AND BACK-OF-HOUSE SPACES.
- G PROVIDE GFCI PROTECTION IN SHOP AREA PER NEC 210.8(B)(10). ALL 120V AND 208V RECEPTACLES THAT ARE SINGLE PHASE AND 50A OR LESS SHALL BE GFCI-PROTECTED. ALL 208V RECEPTACLES THAT ARE 3-PHASE AND 100A OR LESS SHALL BE GFCI-PROTECTED.
- H HAZARDOUS CLASSIFICATION PER NEC 511 NOT REQUIRED IN SHOP AREA BECAUSE THERE IS DIESEL-ONLY REPAIR (CLASS IIIB LIQUIDS). VENTILATION PER IBC 404.3 WILL BE PROVIDED.



1 LOWER FLOOR - POWER
 SCALE: 1/8" = 1'-0"

Pape Kenworth Renovation
 Cosmopolis, WA

BID / CD SET

Date: 03/29/2024

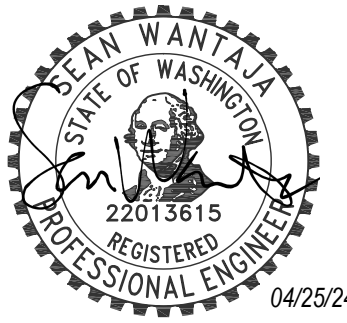
Revisions:

- 1 04/11/2024 ADDENDUM NO. 02
- 2 04/25/2024 ADDENDUM 04

Reviewed by: SEW
 Designed by: JY
 Drawn by: JRM

LOWER FLOOR - POWER

E201



KEYNOTES

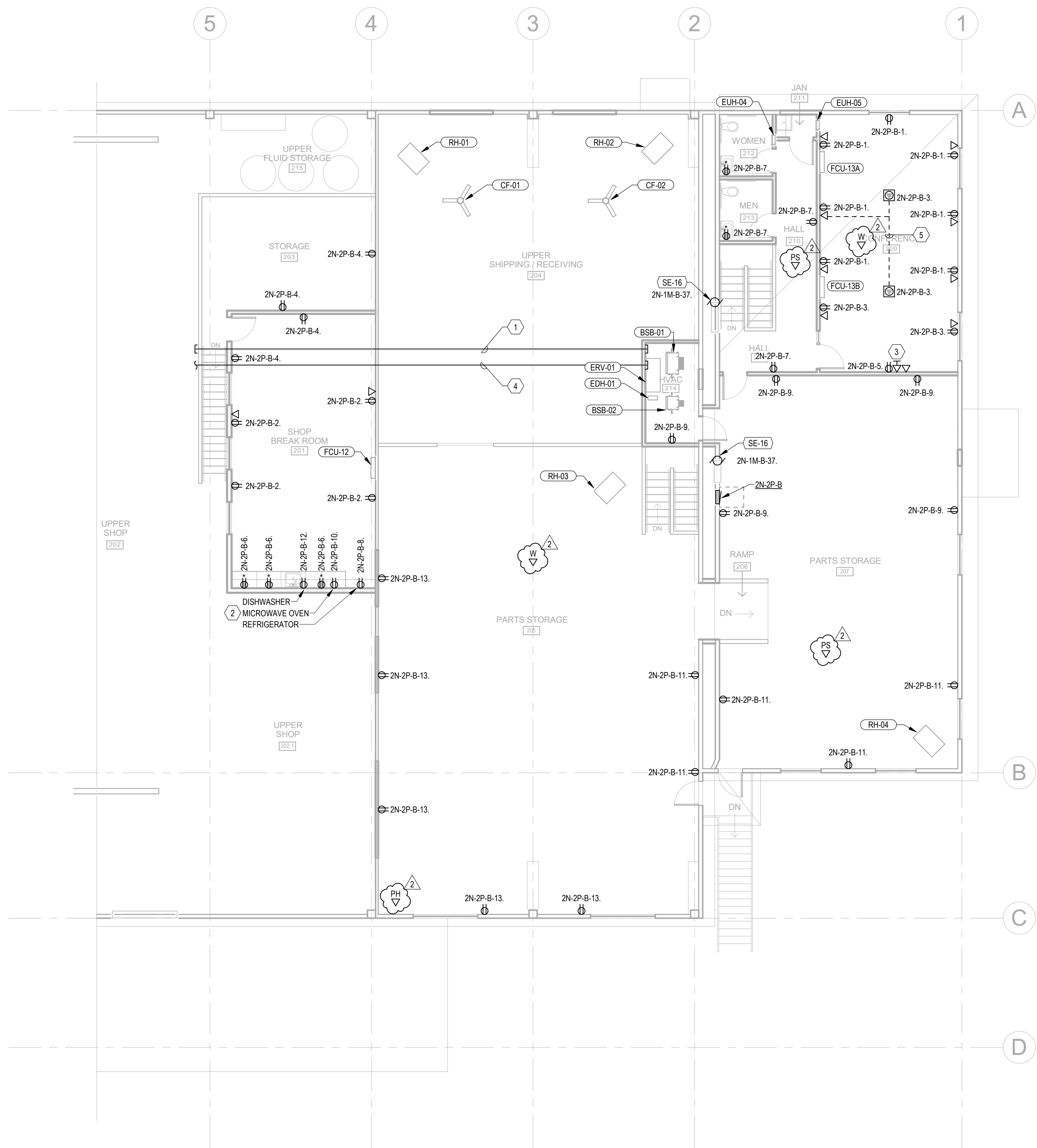
- 1 PROVIDE (4) 1" C WITH PULL STRING FROM IT ROOM BELOW STUBBED INTO WAREHOUSE FOR FUTURE LOW VOLTAGE CABLING.
- 2 PROVIDE POWER TO WALL MOUNTED MICROWAVE, MOUNT AT +5'3" AFF. VERIFY EXACT LOCATION AND MOUNTING HEIGHT WITH ARCHITECT.
- 3 PROVIDE POWER AND DATA TO WALL MOUNTED TELEVISION, COORDINATE EXACT LOCATION AND MOUNTING HEIGHT WITH ARCHITECT.
- 4 PROVIDE (2) 2" C WITH PULL STRING FROM IT ROOM BELOW TO MAIN ELECTRICAL ROOM 101 ON WEST SIDE OF BUILDING FOR FUTURE LOW VOLTAGE CABLING.
- 5 PROVIDE (1) 3/4" C FOR POWER, (1) 1" C FOR DATA AND (1) 1-1/4" C FOR AV PROVISIONS.

ARCHITECTURAL COORDINATION NOTES

- A. PROVIDE FIRE STOPPING FOR ALL PENETRATIONS OF FIRE RATED ASSEMBLIES. FIRE PROOFING MUST BE EQUIVALENT OR HIGHER TO THAT OF THE PENETRATED ASSEMBLY. REFER TO ARCHITECTURAL PLANS.
- B. REFER TO ARCHITECTURAL DEVICES FOR FIRE RATED ASSEMBLIES. MAINTAIN 24" SEPARATION BETWEEN DEVICES IN FIRE-RATED WALLS. PROVIDE FIRE-RATED BOXES OR "PUTTY PADS" AS REQUIRED TO MAINTAIN FIRE RATING.
- C. REFER TO ARCHITECTURAL PLANS FOR ACOUSTIC ASSEMBLIES. PROVIDE ACOUSTIC BOXES OR "PUTTY PADS" AS REQUIRED TO MAINTAIN ACOUSTIC RATING.
- D. IN FRONT OF HOUSE SPACES, COORDINATE EXACT MOUNTING HEIGHT AND LOCATION OF ALL DEVICES AND EQUIPMENT WITH ARCHITECTURAL PLANS PRIOR TO ROUGH-IN. EXAMPLE: BREAK ROOM KITCHENETTES, DEVICES IN OR ABOVE CASEWORK, AND DISPLAYS.

GENERAL ELECTRICAL NOTES

- A. ALL EQUIPMENT AND DEVICES SHOWN IN PLAN ARE NEW UNLESS NOTED OTHERWISE. MECHANICAL AND PLUMBING EQUIPMENT SHOWN IN BOLD FOR REFERENCE. REFER TO MECHANICAL AND PLUMBING EQUIPMENT SCHEDULE FOR CONNECTION CHARACTERISTICS AND ADDITIONAL INSTALLATION DETAILS.
- B. PLANS ARE DIAGRAMMATIC IN NATURE TO COMMUNICATE SCOPE OF WORK AND GENERAL INTENT AND SHALL NOT BE USED FOR EXACT DIMENSIONS.
- C. PROVIDE ROUGH-IN BACKBOX AND 1" CONDUIT ROUTED TO ACCESSIBLE CEILING SPACE FOR ALL DATA OUTLETS.
- D. ALL RECEPTACLES AT OFFICE DESKS SERVING COMPUTERS SHALL BE CONTROLLED VIA LIGHTING VACANCY SENSOR. PROVIDE POWER PACKS INSTALLED IN ACCESSIBLE CEILING SPACE OR WIRELESS POWER DEVICES AS REQUIRED TO MEET CODE MINIMUM CONTROLS.
- E. MAINTAIN AT LEAST 12" SEPARATION BETWEEN POWER AND COMMUNICATIONS WIRING ROUTED PARALLEL. SMALLER SEPARATION MAY BE ALLOWED WHEN CROSSING.
- F. ALL CONDUIT ROUTING SHALL FOLLOW BUILDING LINES WHERE POSSIBLE AND BE FULLY CONCEALED, EXCLUDING THE PARKING GARAGE AND BACK-OF-HOUSE SPACES.
- G. PROVIDE GFCI PROTECTION IN SHOP AREA PER NEC 210.8(B)(10). ALL 120V AND 208V RECEPTACLES THAT ARE SINGLE PHASE AND 50A OR LESS SHALL BE GFCI-PROTECTED. ALL 208V RECEPTACLES THAT ARE 3-PHASE AND 100A OR LESS SHALL BE GFCI-PROTECTED.
- H. HAZARDOUS CLASSIFICATION PER NEC 511 NOT REQUIRED IN SHOP AREA BECAUSE THERE IS DIESEL-ONLY REPAIR (CLASS IIIB LIQUIDS). VENTILATION PER IBC 404.3 WILL BE PROVIDED.



1 OFFICE/UPPER FLOOR - POWER
 SCALE: 1/8" = 1'-0"

Pape Kenworth Renovation
 Cosmopolis, WA

BID / CD SET
 Date: 03/29/2024
 Revisions:
 2 04/25/2024 ADDENDUM 04

Reviewed by: SEW
 Designed by: JY
 Drawn by: JRM

OFFICE/UPPER FLOOR - POWER

