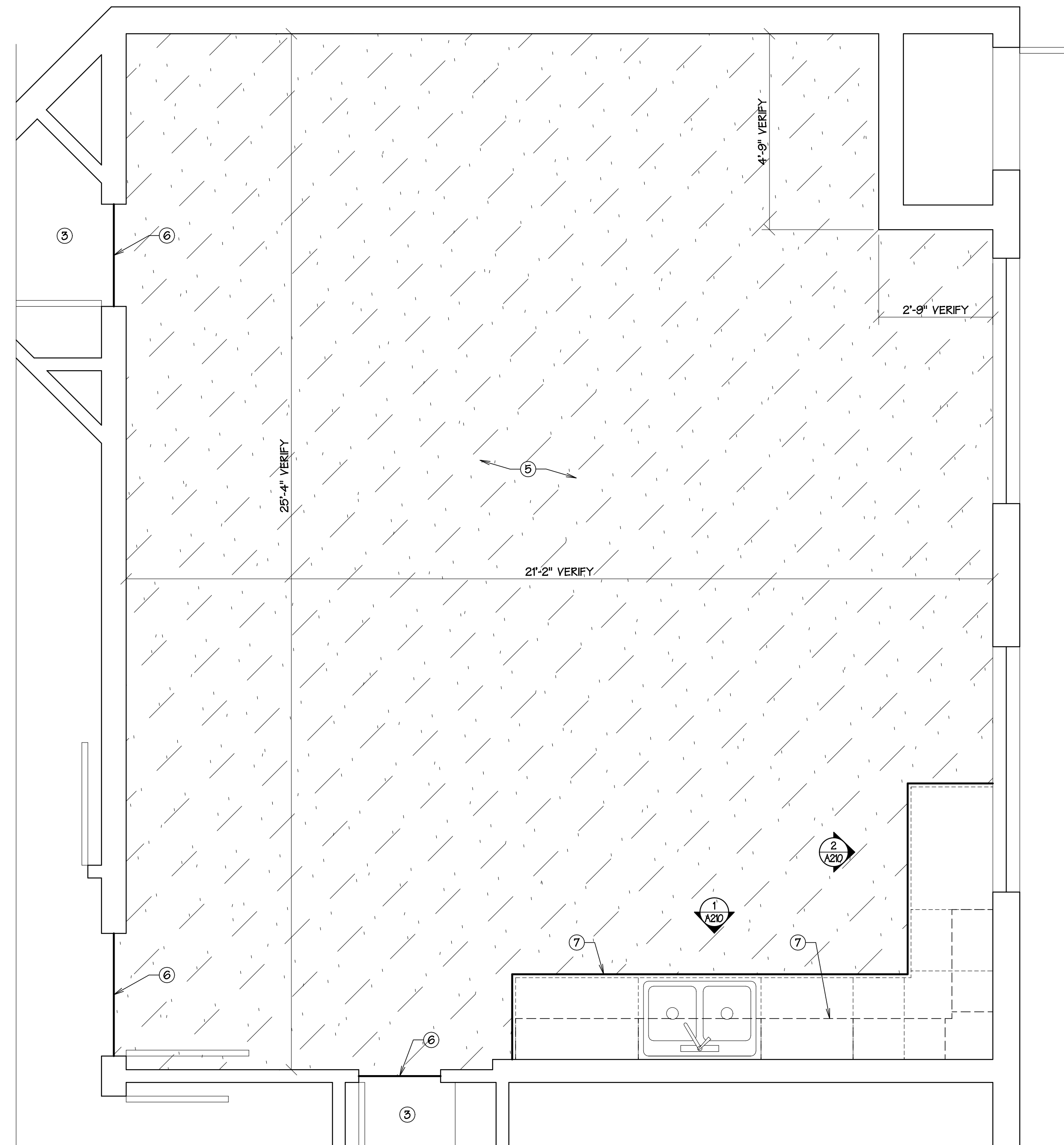
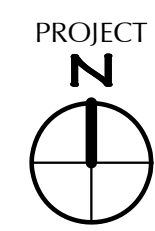


PLAN NOTES

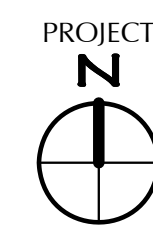
- ① REMOVE EXISTING CARPETING, SHEET VINYL, RUBBER BASE & FLOORING TRANSITION STRIPS, TYP. DISPOSE OF ALL DEBRIS OFF-SITE, TYP.
- ② REMOVE EXISTING UPPER & LOWER CASEWORK. DISPOSE OF ALL DEBRIS OFF-SITE, TYP. VERIFY W/ OWNER FOR POSSIBLE RE-USE OF PLUMBING FINISHES INSTALLED IN NEW CASEWORK.
- ③ VERIFY W/ OWNER IF EXISTING CARPETING IN CLOSET(S) IS TO BE REMOVED & REPLACED W/ NEW FLOORING, TYP.
- ④ EXIST. WINDOWS TO REMAIN.
- ⑤ NEW LUXURY VINYL TILE FLOORING & RUBBER BASE AT HATCHED AREA, TYP. SEE SPECIFICATIONS.
- ⑥ NEW TRANSITION STRIPS AS REQ'D, TYP. SEE SPECIFICATIONS.
- ⑦ NEW UPPER & LOWER CABINETS. SEE ELEVATIONS & SPECIFICATIONS.



DEMOLITION PLAN
1/2" = 1' - 0"

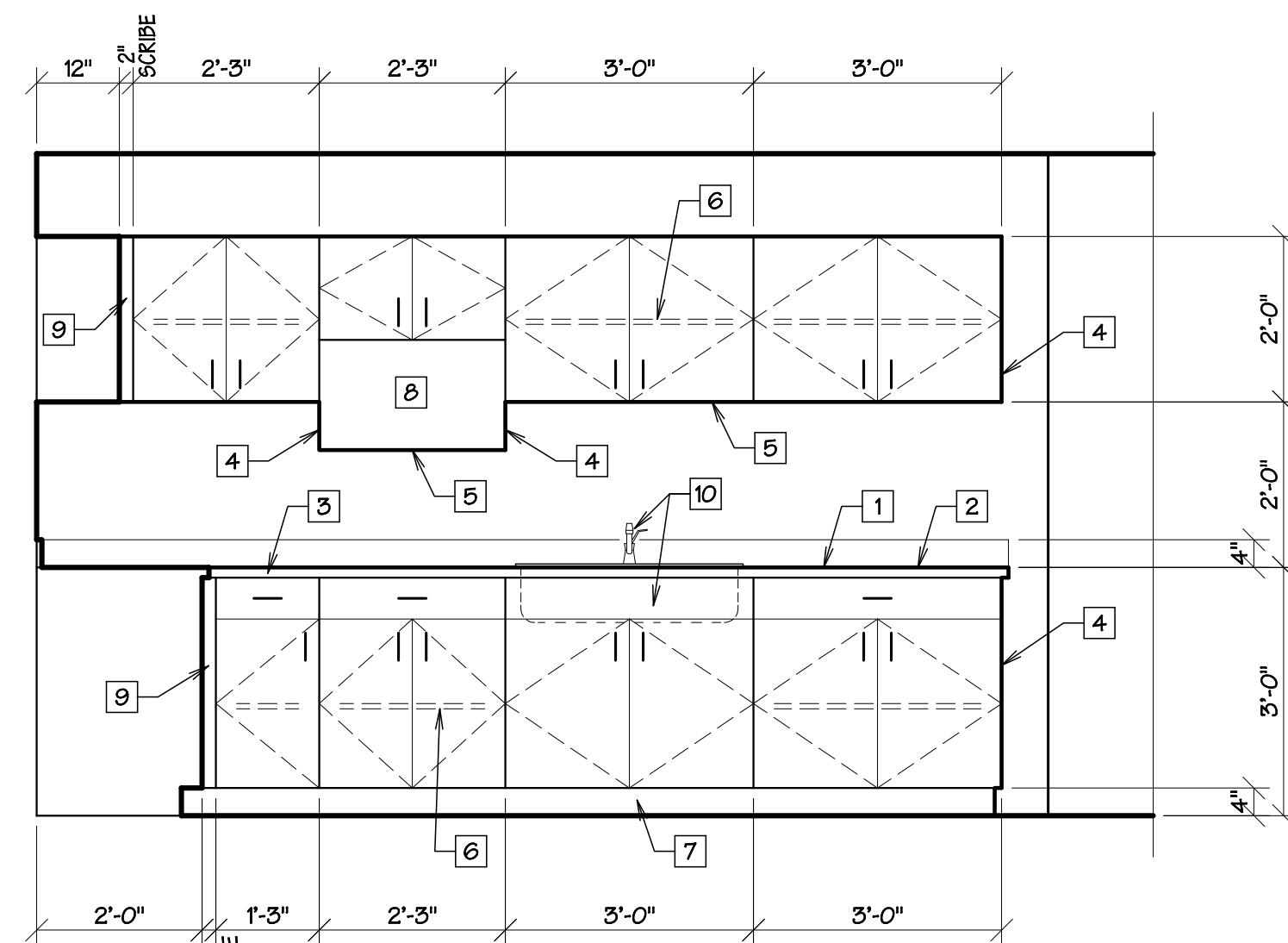


PARTIAL FLOOR PLAN 1/2" = 1' - 0"

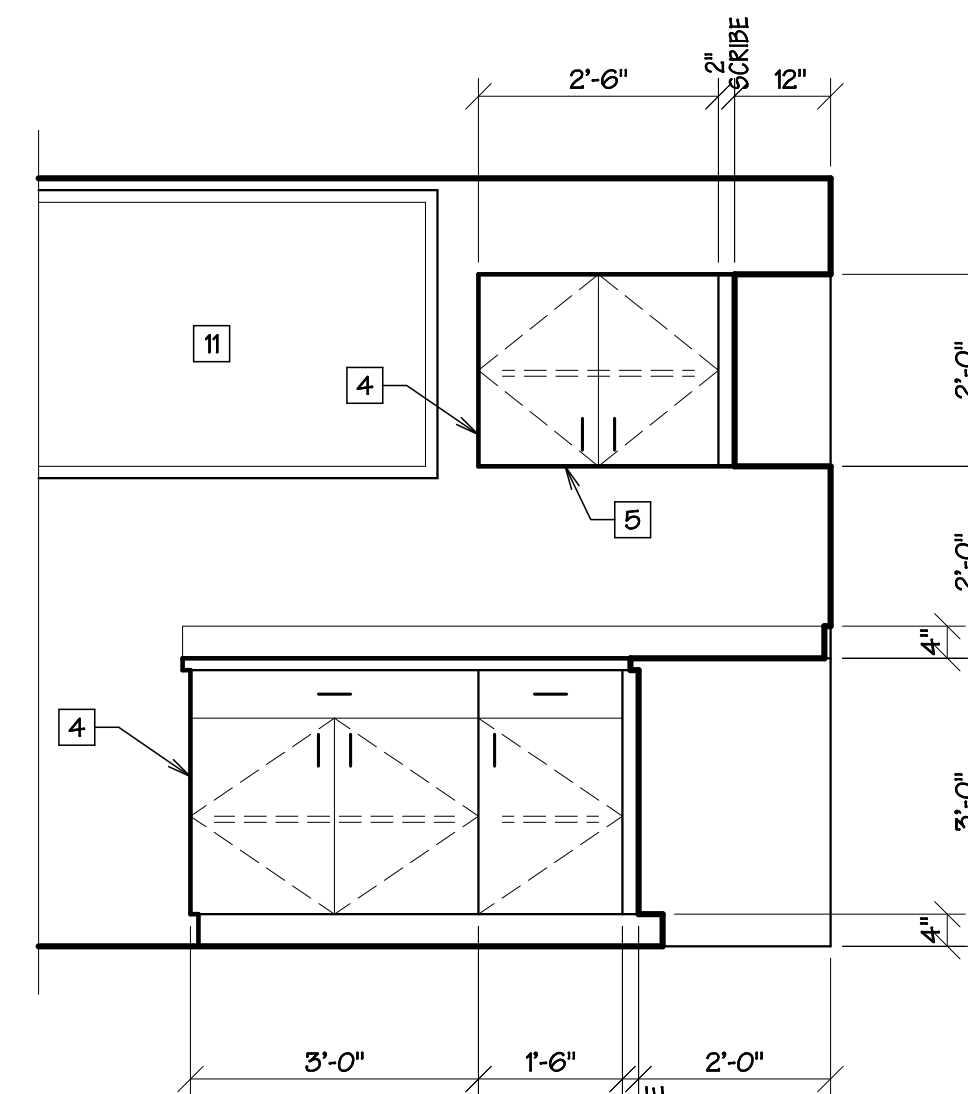


ELEVATION NOTES

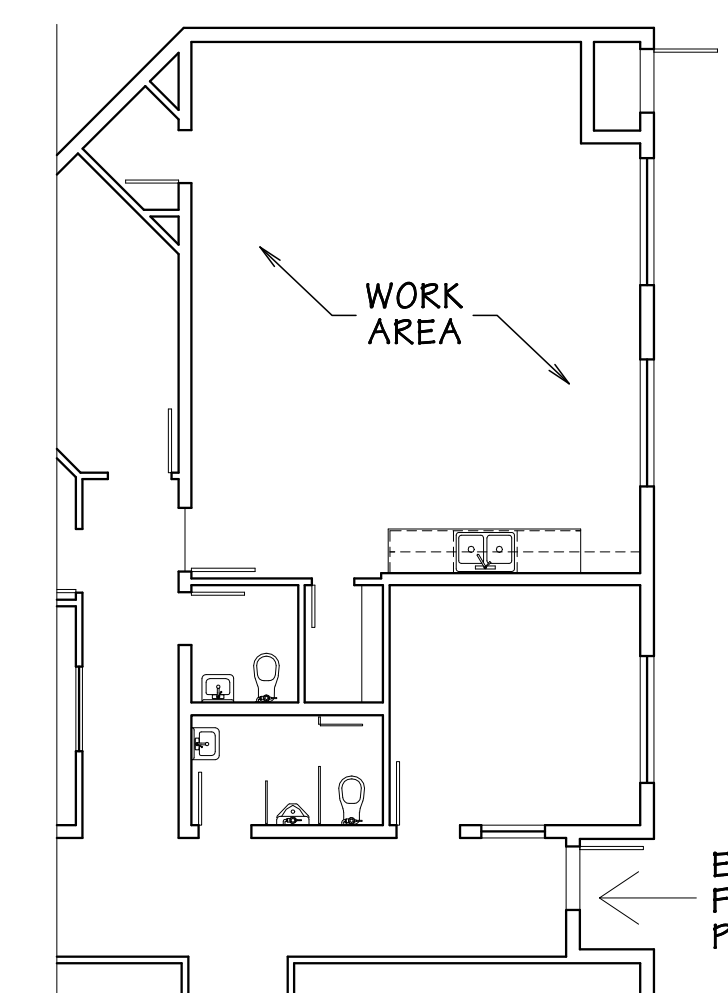
- ① PLASTIC LAMINATE BACKSPASH, TYPICAL.
- ② PLASTIC LAMINATE COUNTERTOP, TYPICAL.
- ③ PVC EDGE, TYPICAL.
- ④ FINISHED END PANEL, TYPICAL.
- ⑤ FINISHED BOTTOM, TYPICAL.
- ⑥ ADJUSTABLE SHELF, TYPICAL.
- ⑦ RUBBER BASE, TYPICAL. PROVIDE RUBBER BASE AROUND BASE CABINETS, TYPICAL.
- ⑧ MICROWAVE OVEN. PROVIDE SHELF AT CABINET FOR SUPPORT.
- ⑨ SCRIBE STRIP TO MATCH CABINET FACE FINISH, TYPICAL.
- ⑩ EXIST. SINK & FAUCET TO BE RE-USED. VERIFY W/ OWNER.
- ⑪ EXISTING WINDOW - VERIFY UPPER CABINET CLEARANCE.



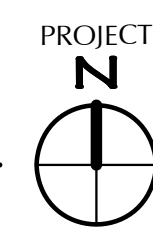
① SOUTH ELEVATION
1/2" = 1' - 0"



② EAST ELEVATION
1/2" = 1' - 0"



KEY PLAN
N.T.S.



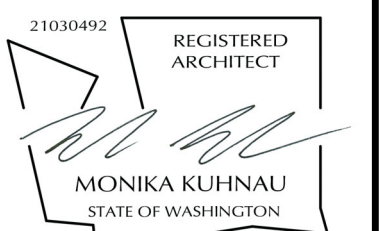
ABERDEEN POLICE DEPARTMENT
210 EAST MARKET STREET
ABERDEEN, WA 98520
360-533-3180

POLICE ONLY
PARKING AREA

EXTERIOR ENTRY
FROM POLICE
PARKING AREA

BID SET

REVISIONS		
no	date	by
-	-	-



project number 23-23
date 9.13.2024
file name 2323BreakRm
drawn by ACG
checked by MFK
owner approval _____
title _____

Key & Floor
Plans, Int.
Elevations &
Notes

A210