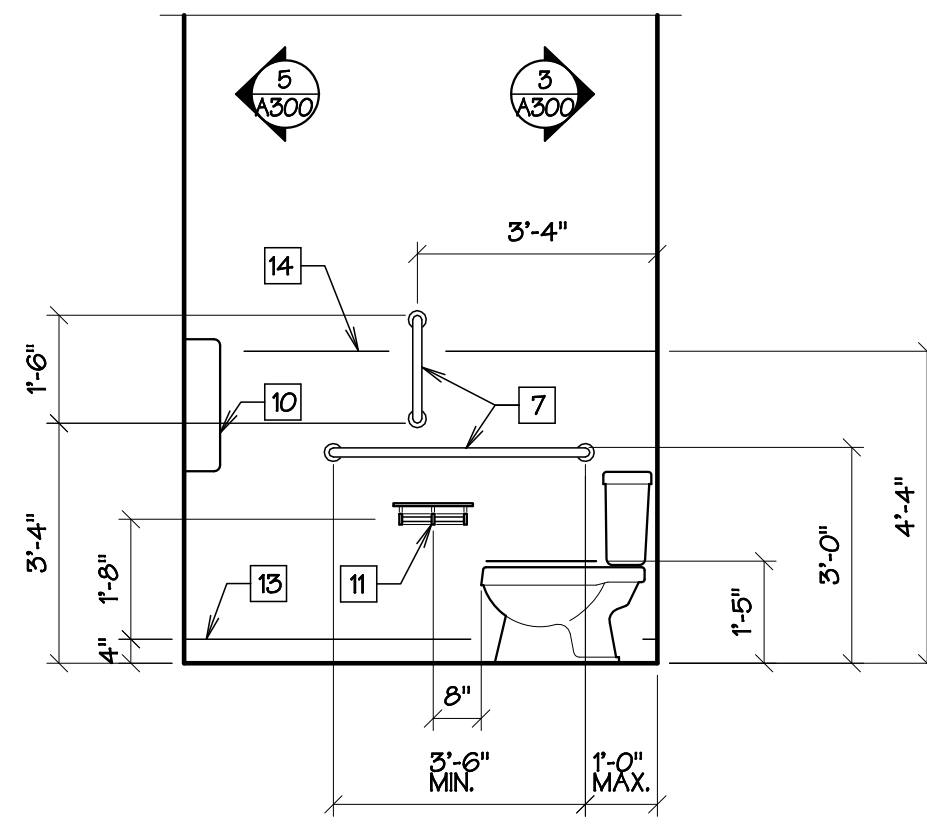
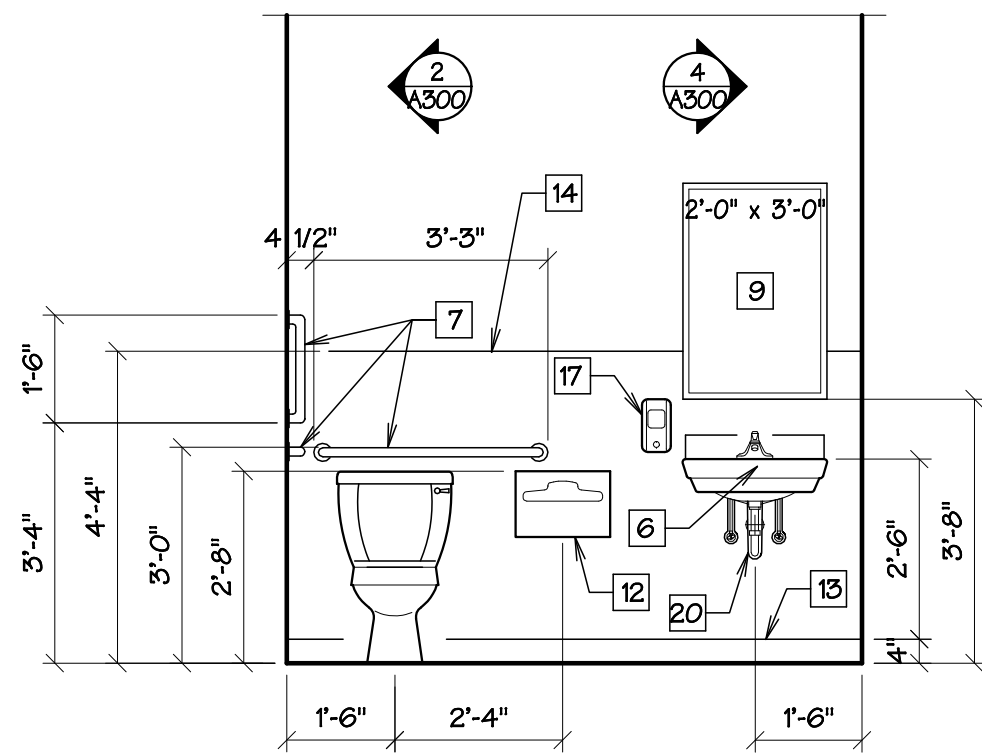


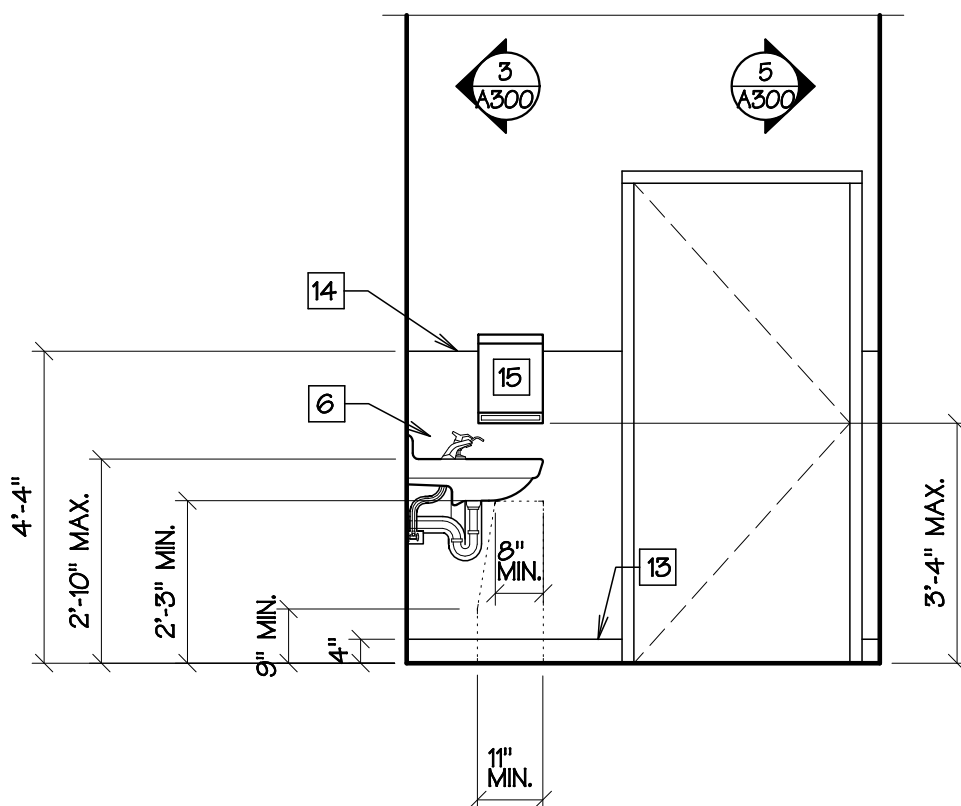
1 COURT CLERKS - 102  
3/8" = 1' - 0"



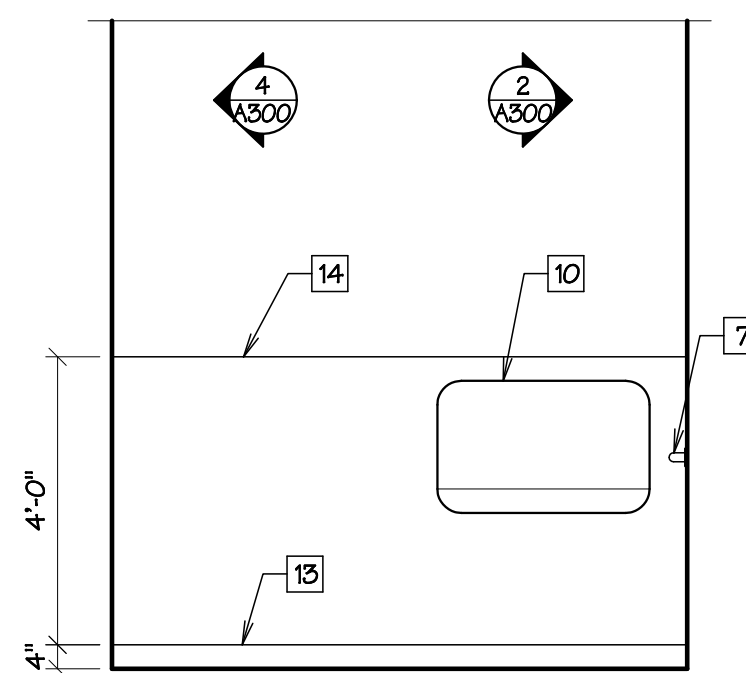
2 RESTROOM, WEST - 104  
3/8" = 1' - 0"



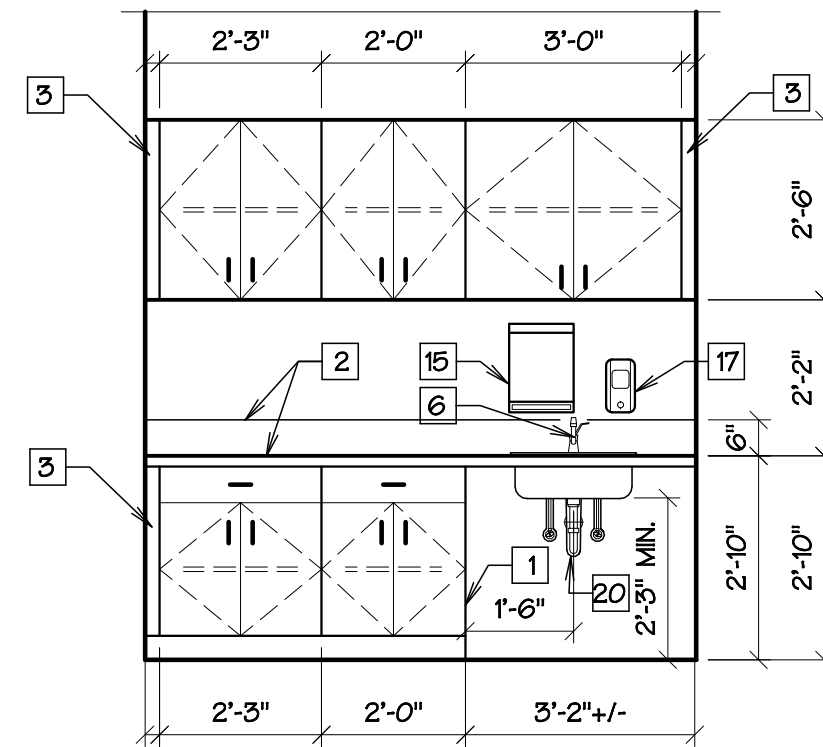
3 RESTROOM, NORTH - 104  
3/8" = 1' - 0"



4 RESTROOM, EAST - 104  
3/8" = 1' - 0"



5 RESTROOM, SOUTH - 104  
3/8" = 1' - 0"



6 PROCESSING - 111  
3/8" = 1' - 0"

NO.	ROOM NAME	FLOORS		BASE ①	WALLS		WALLS/CEILING FIRE CLASS MIN.	CEILING		REMARKS
		MATERIAL	FINISH		MATERIAL	FINISH		MATERIAL	FINISH	
101	LOBBY	•	•	•	•	•	CLASS A	•	•	
102	COURT CLERKS	•	•	•	•	•	CLASS C	•	•	
103	STORAGE	•	•	•	•	•	CLASS C	•	•	
104	RESTROOM	•	•	•	•	•	CLASS C	•	•	③
105	HALL	•	•	•	•	•	CLASS A	•	•	
106	CONFERENCE	•	•	•	•	•	CLASS C	•	•	8'-0"
107	HALL	•	•	•	•	•	CLASS A	•	•	
108	STORAGE	•	•	•	•	•	CLASS C	•	•	
109	SQUAD ROOM	•	•	•	•	•	CLASS C	•	•	12'-0"
110	SQUAD ROOM	•	•	•	•	•	CLASS C	•	•	
111	PROCESSING	•	•	•	•	•	CLASS C	•	•	③
112	EVIDENCE	•	•	•	•	•	CLASS C	•	•	
113	OFFICE	•	•	•	•	•	CLASS C	•	•	8'-0"
114	OFFICE	•	•	•	•	•	CLASS C	•	•	
115	HALL	•	•	•	•	•	CLASS A	•	•	
116	MULTI-PURPOSE	•	•	•	•	•	CLASS C	•	•	12'-0" ③
117	OFFICE	•	•	•	•	•	CLASS C	•	•	
118	MULTI-PURPOSE STORAGE	•	•	•	•	•	CLASS C	•	•	
119	HALL	•	•	•	•	•	CLASS A	•	•	8'-0"
120	INTERVIEW	•	•	•	•	•	CLASS C	•	•	12'-0" ②
121	CLEANING CLOSET	•	•	•	•	•	CLASS C	•	•	
122	HOLDING	•	•	•	•	•	CLASS C	•	•	② ③
123	HALL	•	•	•	•	•	CLASS A	•	•	8'-0"
124	ARMORY / MECHANICAL	•	•	•	•	•	CLASS C	•	•	12'-0"
125	BREAK ROOM	•	•	•	•	•	CLASS C	•	•	
126	I.T.	•	•	•	•	•	CLASS C	•	•	
127	SHOWER	•	•	•	•	•	CLASS C	•	•	③
128	MENS RESTROOM	•	•	•	•	•	CLASS C	•	•	
129	HALL	•	•	•	•	•	CLASS A	•	•	8'-0"
130	WOMENS RESTROOM	•	•	•	•	•	CLASS C	•	•	12'-0"
131	SHOWER	•	•	•	•	•	CLASS C	•	•	③
132	STORAGE	•	•	•	•	•	CLASS C	•	•	
133	HALL	•	•	•	•	•	CLASS A	•	•	8'-0"
134	HALL	•	•	•	•	•	CLASS A	•	•	
135	FINGERPRINT	•	•	•	•	•	CLASS C	•	•	12'-0"
136	POLICE CLERKS	•	•	•	•	•	CLASS C	•	•	

REMARKS

① REMOVE EXISTING WOOD WALL BASE & DISPOSE ALL DEBRIS OFF SITE - PATCH & PRIME WALLS AS REQUIRED.

② PROVIDE 5/8" CDX PLYWOOD BACKING BEHIND GYPSUM BOARD - ALL WALLS.

③ PROVIDE MOISTURE RESISTANCE BEHIND NEW PLUMBING, TYP.

④ EXISTING INTERIOR FINISH MATERIALS THAT DO NOT COMPLY WITH THE INTERIOR FINISH REQUIREMENTS OF THE IBC SHALL BE PERMITTED TO BE TREATED WITH APPROVED FIRE-RETARDANT COATING IN ACCORDANCE WITH THE MFR'S INSTRUCTIONS TO ACHIEVE THE REQUIRED RAITING.

ELEVATION NOTES

- 1 FINISHED END PANEL, TYP.
- 2 PLASTIC LAMINATE TOP, FRONT, END, & BACKSPASH, TYP.
- 3 1-1/2" MIN. WALL SCRIBE, PAINTED OR PLASTIC LAMINATE, MATCH ADJACENT MATERIAL, TYP.
- 4 SHOWER ROD, TYP.
- 5 SHOWER ASSEMBLY - SEE SPECIFICATIONS.
- 6 SINK ASSEMBLY - SEE SPECIFICATIONS.
- 7 GRAB BAR, TYP.
- 8 LOCATE FLUSH HANDLE ON RIGHT SIDE OF TANK.
- 9 SURFACE MIRROR, PROVIDE SECURE BACKING.
- 10 WALL MOUNTED DIAPER CHANGING STATION, PROVIDE SECURE BACKING, & CONFIRM HEIGHT PER MFR. RECOMMENDATION.
- 11 SURFACE TOILET TISSUE DISPENSER W/ SHELF.
- 12 SURFACE TOILET SEAT COVER DISPENSER.
- 13 4" RUBBER BASE, TYP. PROVIDE RUBBER BASE AROUND BASE CABINETS, TYP.
- 14 FRP WAINGCOT, TYP. - SEE ROOM FINISH SCHEDULE.
- 15 SURFACE PAPER TOWEL DISPENSER. PROVIDE REQUIRED WALL BACKING.
- 16 SPACE FOR KNEE ROOM BENEATH COUNTERTOP.
- 17 SURFACE SOAP DISPENSER, PROVIDE SECURE BACKING.
- 18 SURFACE TOWEL HOOKS, PROVIDE SECURE BACKING.
- 19 WALL MOUNTED SHELF, PROVIDE SECURE BACKING.
- 20 PROVIDE INSULATED, PROTECTIVE COVER AT HOT WATER SUPPLY & WASTE PIPING, TYPICAL.

NOTE: ALL BASE CABINETS SHALL BE 24" DEEP & WALL CABINETS SHALL BE 12" DEEP UNLESS SHOWN OTHERWISE.

PERMIT SET

REVISIONS		
no	date	by
△	12.3.24	MFK

21030492 REGISTERED ARCHITECT  
MONIKA KUHNAU  
STATE OF WASHINGTON

project number 21-45  
date 7.18.2024  
file name 2145 A300RD  
drawn by TDV  
checked by  
owner approval

title  
Interior Elevations & Room Finish Sched.

A300